

Maika'i Kaua'i Hemolele i ka Mālie



Hanalei Valley
April 15 2018

© Bob Wright

Community Led Flood Recovery for Long Term Resilience

Mehana Vaughan, DLNR Climate Change Conference

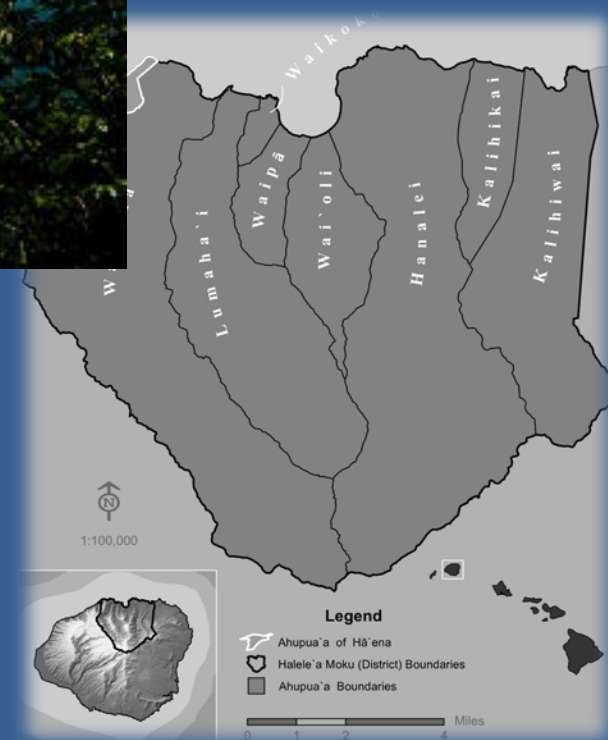


Halele'a District, Kaua'i

Island's North Shore

Island of Kaua'i, Hawai'i

Pacific Ocean
Most isolated land mass
on earth



Sunday, April 15, 2018, U.S. record 49.69 inches of rain in 24 hours





Eight miles of Highway Closed by ten Landslides



CIVILBEAT.ORG



**Cutting off Access,
Isolating
Communities
for over a Year**

Emergency Response, Evacuation, Supplies



400 tourists by national guard helicopter,
1000 people by volunteer boats, tons of supplies

Lessons from Response & Recovery

Student interviews:
80+
Community members
First responders,
& Government
personnel



1. Local Environmental Understanding & Respect

- Blessing that there was no loss of life.
- Opportunity to learn. Cleansing
- “Now, whenever it rains, I go outside and observe the new paths of the water.”



2. Know your Neighbors, Social Cohesion



Equipment
WATER PUMPS! ~ standing water + health
Mail, Medication, Bills
Moving equipment parts in / mechanic
Trauma support / Mental Health
Doctors
Intake of funds + Non-profits
Distribution of funds
Long-term + Economy building + County permitting for to include less... from Flood
Lack of internet
Support Kalo farmers
Support at Key distribution points



Data Base of over 500 affected families



Clean ups, health care, counseling, financial services

3. Decentralized, Organic Collaboration



4000 meals/day (1 month), Community food bank



Everyone Contributing their Gifts



4. Devolve Decision Making & Build Trust



Respond to
Evolving
On- Site
Conditions

Grow Multi-
Level
Partnerships
&
Relationships



5. Limit & Manage Tourism



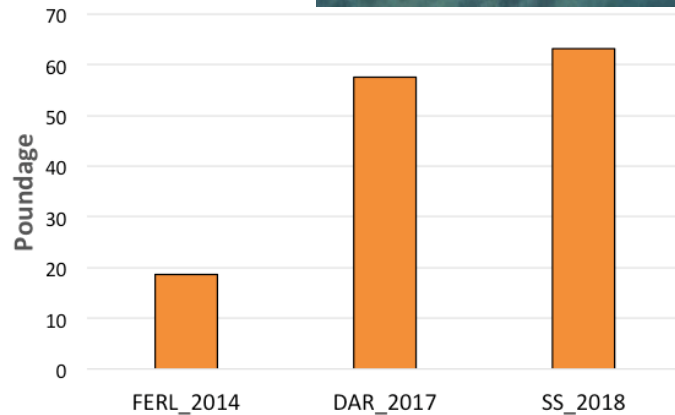
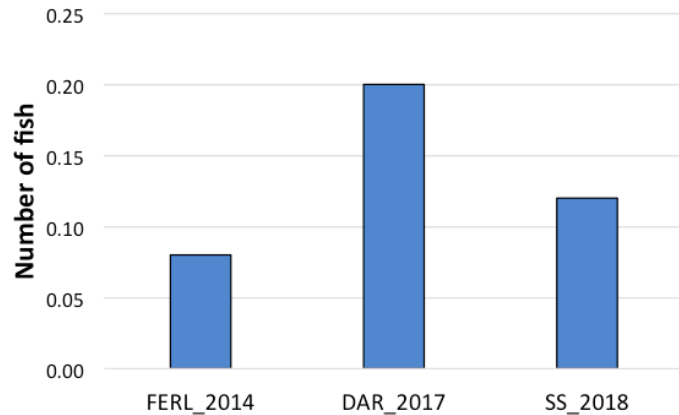
3000 to
0 to 900
visitors
per day





**Growth of
macroalgae
& coral**

Makua Pu'uhonua



**Increased
Fish
Biomass,
Less skittish**

6. Preventative Care for Land & Waters





**Clean Streams
& Waterways
60 commercial
dump truck
loads**

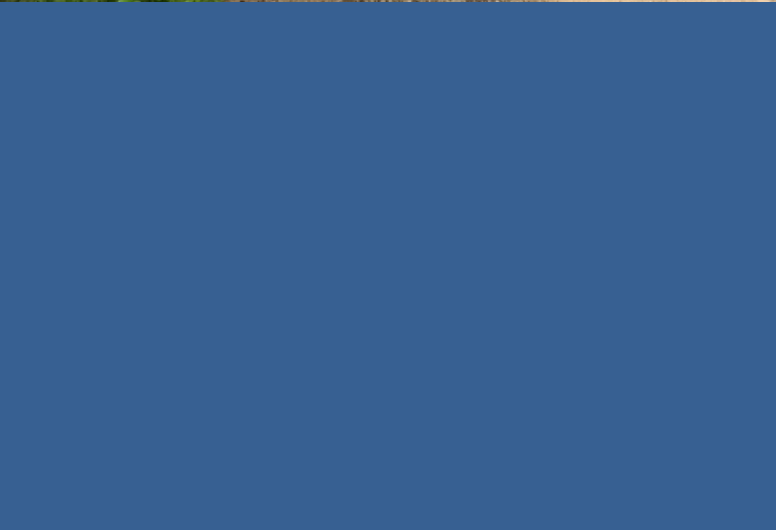


7. Careers for Local Youth



8. Adaptation to New Normal









August 2018 Hurricane Lane



RESILIENCE

Key Lessons For Poly-Centric Resilience

1. Environmental Understanding and Respect
2. Social Cohesion, Neighbor to Neighbor Response
3. Decentralized Collaboration, Community Leaders, Non-Profits, Gifts
4. Manage & Limit Tourism
5. Community-Led Government Supported Response (Devolve)
6. Proactive Care for Lands and Waters
7. Creation of Careers for Youth
8. Avoid Rush to Return to “Normal”

Local Level Self – Sufficiency and Adaptation

Hawai'i Community Foundation
HALELE'A, E Alu Pū, KUA,
Kūoko'a, Courthouse Hui,
Monica Montgomery,
Malia Akutagawa & Malia Nobrega-
Olivera, NERM 691/491 Students



Questions?