

An illustration of four diverse women of various ethnicities and ages. One woman has glasses and large hoop earrings, another has curly hair and a headband, and a third has a halo. They are all smiling or looking thoughtfully. The background has some floral motifs.

Building Bridges, Not Walking on Backs:

A Feminist Economic Recovery Plan for COVID-19

HAWAI'I CLIMATE CHANGE MITIGATION AND ADAPTATION COMMISSION

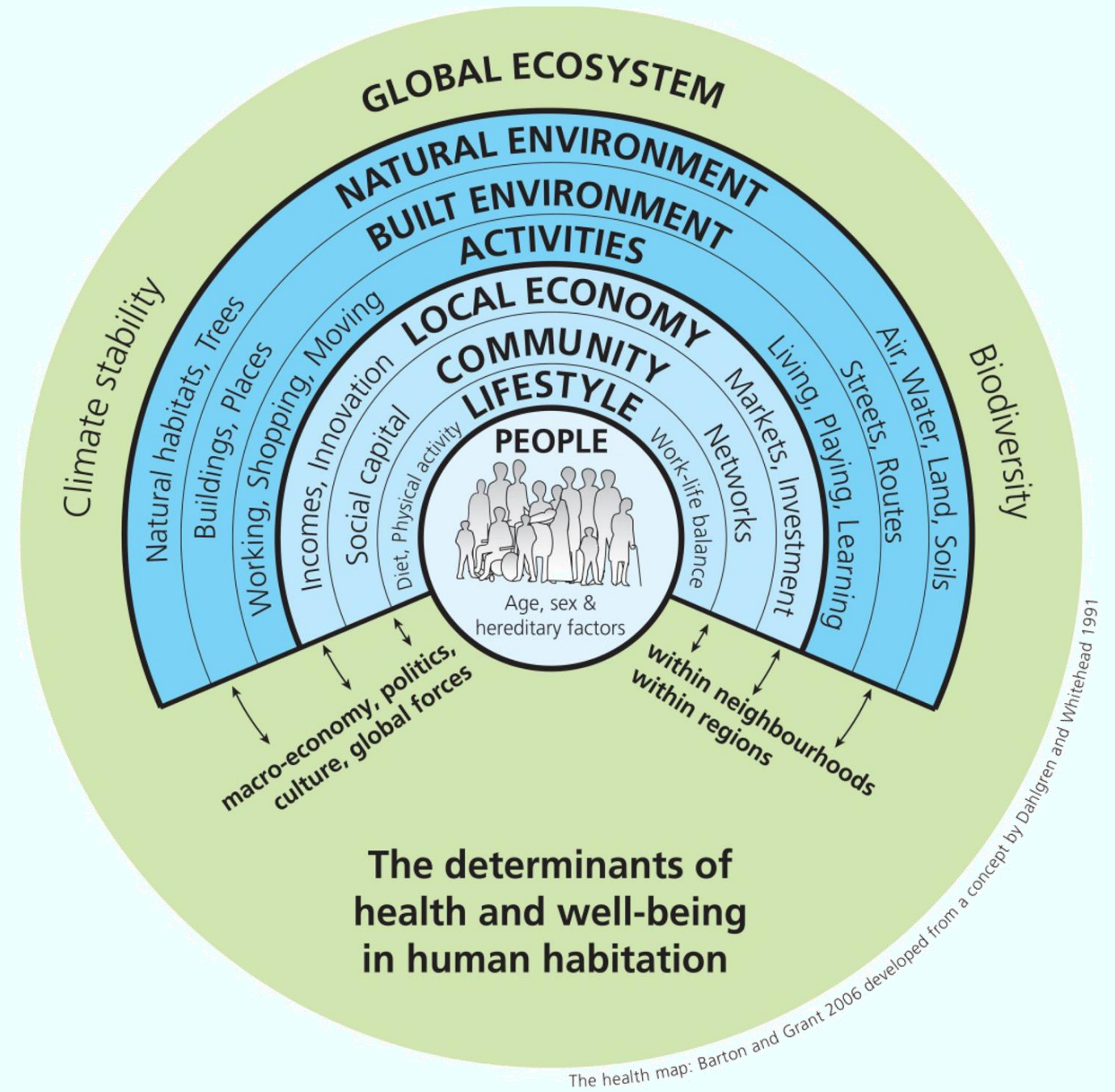
Wednesday May 13, 2020

Hawai'i Feminist COVID-19 Response Team



Hawai'i
or
Departm

Bridges Not Backs:
A Feminist
Economic Recovery
Plan for COVID-19
X
A Better Normal:
Post COVID-19
Recovery for a
Climate Ready
Hawai'i



Bridges Not Backs:
A Feminist
Economic Recovery
Plan for COVID-19

x

A Better Normal:
Post COVID-19
Recovery for a
Climate Ready
Hawai'i

What would it look like for
Hawai'i to become a national
leader with an innovative
gender equity job pipeline
program?

- Climate change leads to more violence against women and girls

AND

- Women play a key role in addressing climate mitigation and adaptation

Gender x Climate Impacts



VOLUME 006

Global Practice towards Equality- Climate and Gender Equality

2020 5/17 10:00 am Beijing Time
SUNDAY 09:00 am Jakarta Time

5/16 SAT 04:00 pm Hawaii Time



Jiayi Xu, Specialized in climate and sustainable development policy field, Former researcher of World Resources Institute, leading international climate governance and low carbon economic transition pillar



Jasmine Puteri, Senior Forest Campaigner for political and market at Greenpeace, Obama Leader: Asia Pacific



Maxine Burkett, Professor of Law at University of Hawai'i, Global Fellow at the Woodrow Wilson International Center for Scholars, Co-Founder of Institute for Climate and Peace



Zelda Keller, peace and conflict transformation specialist, Executive Director at the Institute for Climate and Peace



Instagram @girlupeastasiaandpacific



UNITED NATIONS
FOUNDATION

“The Threats of Climate Change
are not Gender-Neutral”
– UN Women

Saturday, May 16 at 4 pm HST

Register to attend the free session by the UN Foundation:
https://unfoundation.zoom.us/webinar/register/WN_aSbrJ4fkS2-ramSaWrrYwg

Dr. Maxine Burkett
Professor of Law at the
University of Hawai‘i of Mānoa

Zelda Keller (Lāna‘i)
Institute for Climate and Peace

A Feminist Economic Recovery Plan for COVID-19

Building Bridges, Not Walking on Backs:

A Feminist Economic Recovery Plan for COVID-19

1. How the state should deal budgetary changes including restrictions, programmatic changes, furloughs or other employment related **efforts to contain costs or enhance revenue**;
2. How the state should **support, enhance and stimulate Hawai'i's economy**, given the possibility that even after the stay-at-home orders have been lifted, the tourism industry may not return to normal levels for some time to come; and
3. **How the state should spend** federal COVID-response funds coming to the state.
4. How the state should reshape and diversify the economy, **making Hawai'i more resilient** to future economic downturns.



Hawai'i State Commission
on the Status of Women
Department of Human Services
State of Hawai'i

An illustration of four diverse women of various ethnicities and ages. One woman has glasses and a yellow earring, another has curly hair and a yellow earring, and a third has a yellow headband. They are all smiling or looking thoughtfully. The background is light blue with some floral motifs.

Building Bridges, Not Walking on Backs:

A Feminist Economic Recovery Plan for COVID-19



Hawai'i State Commission
on the Status of Women
Department of Human Services
State of Hawai'i

Key Recommendations (abridged)

1. **Build a feminist COVID-19 response and recovery plan.**

The COVID-19 response, recovery and stimulus actions must include input from the impacted, essential sectors that employ a majority of women and organizations that serve women, girls and people who identify as women, femme and nonbinary.

2. **To contain costs or enhance revenue the state should:**

Follow State Department of Human Services recommendations and ensure no cuts to social services, including services for domestic violence and for maternal, sexual, reproductive and mental health and avoid government employee furloughs.

3. **To support, enhance and stimulate Hawai'i's economy the state should:**

Invest in subsistence living and the perpetuation of land- and sea-based practices traditional to Hawai'i's ecological and food system.

4. **Use federal stimulus funds to promote reform and programs in the following areas**

Include a twenty percent pro rata share of the COVID-19-response funds in trust for their express recovery needs.

An illustration of four diverse women with various hairstyles and accessories, including glasses and large hoop earrings. They are depicted in a stylized, colorful manner with soft, painterly textures. The background is a light blue with faint floral patterns.

Building Bridges, Not Walking on Backs:

A Feminist Economic Recovery Plan for COVID-19



Hawai'i State Commission
on the Status of Women
Department of Human Services
State of Hawai'i

Key Recommendations (abridged)

5. To diversify and reshape the economy we must:

- A. Reorient our economies away from the military, tourism and luxury development
- B. Build the state's social infrastructure
- C. Redress critical economic inequalities

For Example: Support sustainable opportunities and ensure women have access to “green jobs” in renewable energy, energy efficiency, and environmental management and construction jobs (89.9% male workers) through stimulus programs that promote gender and racial equity.

Bridges Not Backs:
A Feminist
Economic Recovery
Plan for COVID-19
X
A Better Normal:
Post COVID-19
Recovery for a
Climate Ready
Hawai'i

Recommendations

1. Hawai'i Climate Change Mitigation and Adaptation Commission can help see a better normal and an equitable recovery that includes centering equity
 1. Sustainable and subsistence recovery projects
 2. Nature-based solutions
 3. Green jobs
2. Support and share the *A Better Normal: Post COVID-19 Recovery for a Climate Ready Hawai'i* brief
3. Become champions of other plans and intersecting recommendations by being an ally, partner, and key collaborator across government, business, and community

Bridges Not Backs:
A Feminist
Economic Recovery
Plan for COVID-19
X
A Better Normal:
Post COVID-19
Recovery for a
Climate Ready
Hawai'i

What would it look like for Hawai'i to become a national leader with an innovative **gender equity job pipeline** program?

DLIR and the **Hawai'i State Commission on the Status of Women** are in the process of formal collaboration to create an innovative **gender equity job pipeline program**.

*Within a gender equity job pipeline, what **types of green jobs** would you like to see?*

*How can the Commission work to create **visibility** and **support** for this new program across sectors?*

Did you miss the virtual town hall with Senator Hirono about a feminist recovery?

If so, you can access a public
recording via link to Senator
Hirono's page:

[www.facebook.com/senatorhirono/
videos/632811540783970/](https://www.facebook.com/senatorhirono/videos/632811540783970/)



Virtual Town Hall

with
U.S. Senator Mazie K. Hirono

COVID-19 and the Impact on Women

**Friday, May 1,
2020
10:00 am HST**

**Join us on
Facebook Live
@senatorhirono**

Hosted By:

**HAWAII STATE
COMMISSION**
ON THE STATUS OF WOMEN

**Planned
Parenthood**
Adv. No matter what.
Planned Parenthood serves Northwest and Hawaii

**Hawaii Feminist COVID-19
Response Team**



Save the Date

for A Feminist Recovery Forum Series

Part III: Equity & Justice

Tuesday, May 19th
9:00 am – 11:00 am HST/
12:00 pm - 2:00 pm PST/
3:00 pm - 5:00 pm EST



WAIWAI COLLECTIVE



HAWAII STATE
COMMISSION
ON THE STATUS OF WOMEN



For more information:

Executive Director

kjabola-carolus@dhs.hawaii.gov

Website

<http://humanservices.hawaii.gov/hscsw/>

Social Media

Facebook: @HSCSW

Instagram: @StatusOfWomenHawaii

Twitter: @HawaiiCSW