



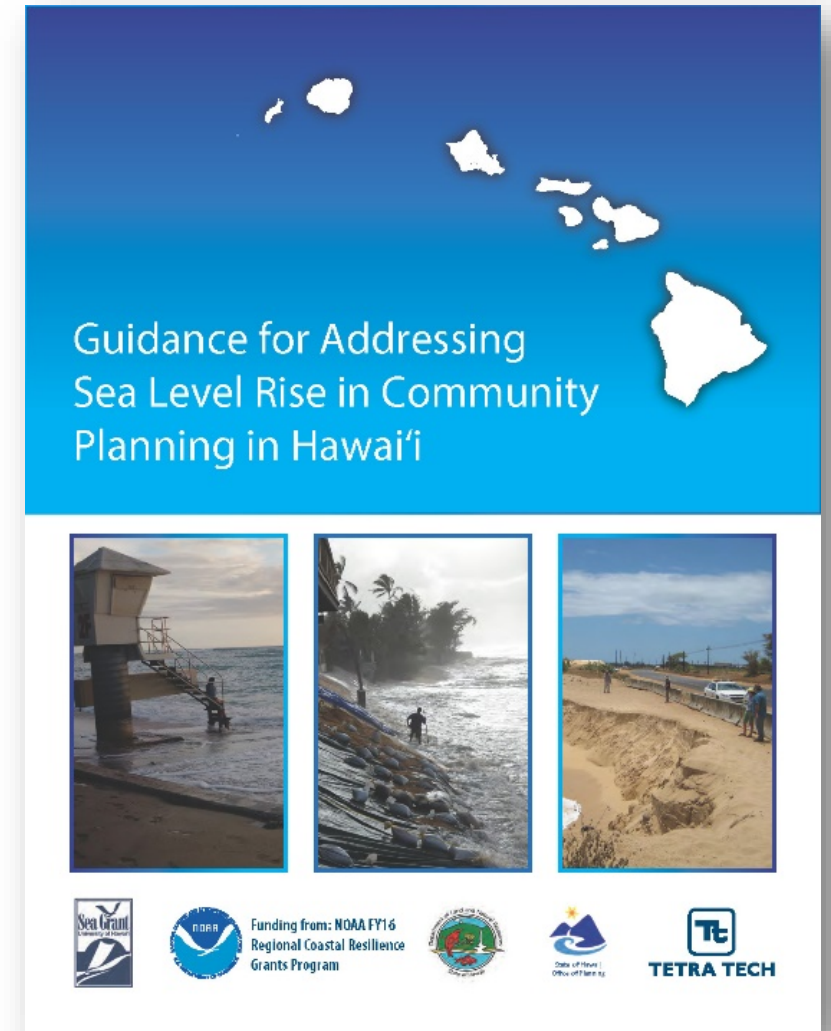
Guidance for Addressing Sea Level Rise in Community Planning in Hawai'i

Hawai'i Sea Grant: Brad Romine, Tara Owens, Katy Hintzen, Melanie Lander, Ruby Pap, Darren Lerner

DLNR-OCCL: Sam Lemmo

OP-CZM: Justine Nihipali

Tetra Tech, Inc.: Kitty Courtney



Funding from: NOAA FY16
Regional Coastal Resilience
Grants Program



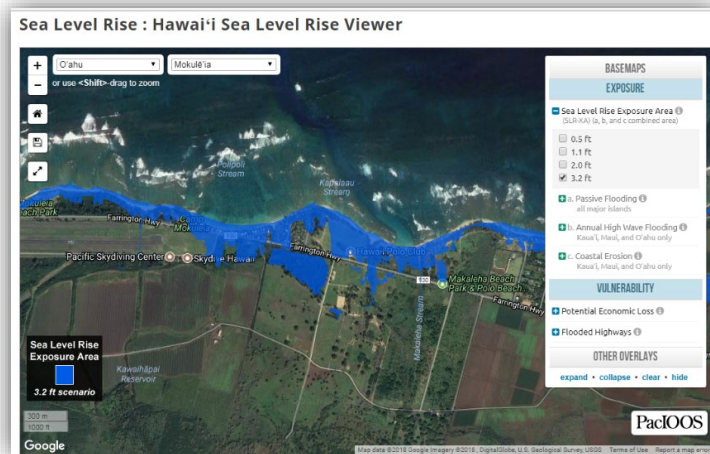
State of Hawaii, Office of Planning





BUILDING RESILIENCE TO COASTAL HAZARDS AND CLIMATE CHANGE IN HAWAI'I

Three complementary projects building on the *Hawai'i Sea Level Rise Vulnerability and Adaptation Report* and other recent projects and initiatives:



Hawaii Sea Level Rise Viewer
hawaiisealevelriseviewer.org



seagrant.soest.hawaii.edu



Funding from: NOAA FY16
Regional Coastal Resilience
Grants Program



State of Hawaii, Office of Planning



“It will be critically important for localities to institutionalize flexible decision-making frameworks that extend long into the future, possibly for 50 or more years.”¹

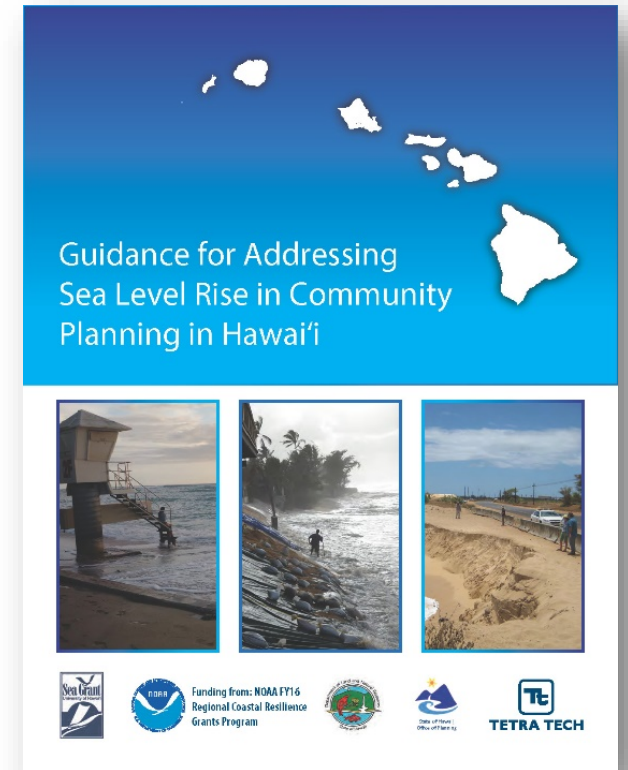
- Adapting to sea level rise requires communities to make difficult decisions, weighing priorities and consequences
- Community planning provides a critical entry point and existing framework for locally-appropriate combination of:
 - Decision analysis
 - Land use planning
 - Public participation

1.Quay, R. (2010). Anticipatory Governance. *Journal of the American Planning Association*, 76(4), 496-511.



Purpose and Approach

- Purpose: Assist county planners to build upon and improve ongoing efforts to address sea level rise
- Focus: County general and community plans as a critical entry point, guidance may also be applied in other related planning efforts
- Developed through research and extensive input and technical review from planners in each of the counties:
 - 15 outreach events with over 100 county staff and other stakeholders (workshops, webinars, smaller consultations)
 - Written comments on drafts were essential to refining the guidance

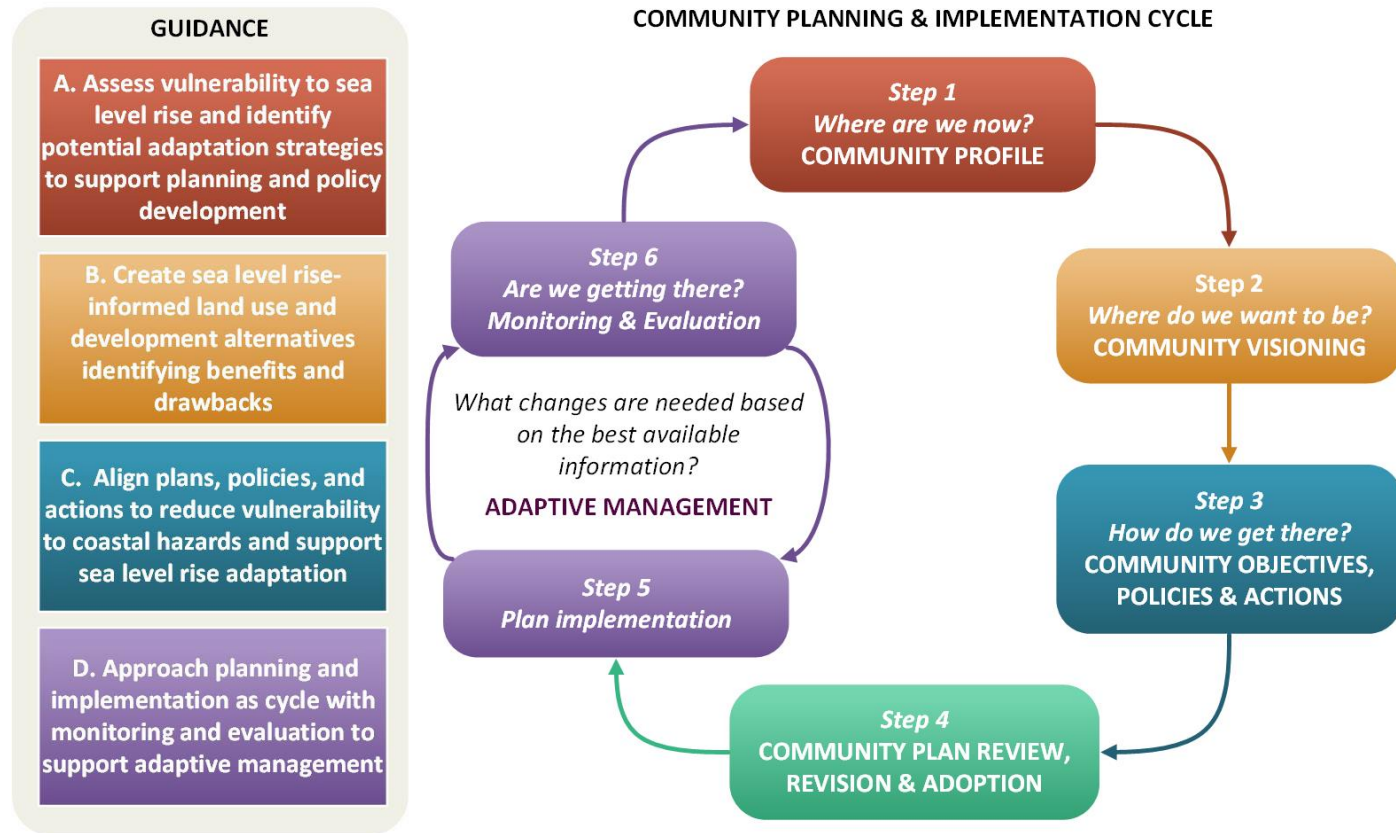


Results and Recommendations

- **Guidance** under four key topics:

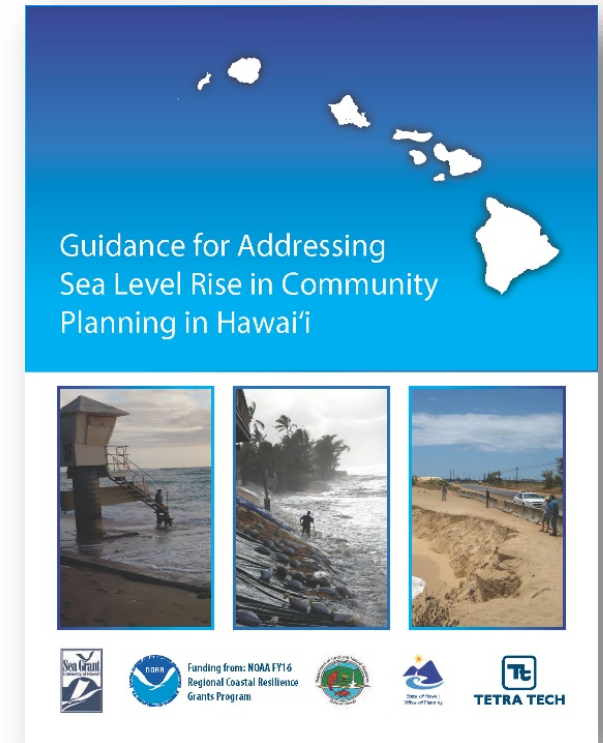
- A. Vulnerability assessment**
- B. Land use and development alternatives**
- C. Plan and policy alignment**
- D. Adaptive management**

- With **Recommended Practices** under each Guidance
- **Examples and Resources** for each of the Recommended Practices (Appendix 1)
- Summary of recommended practices with relevance to State Priority Guidelines (Appendix 2)



Concluding Thoughts


- Adapting to sea level rise will be challenging and disruptive. However, disruption brings opportunity for innovation and creativity to re-envision our communities as more equitable, sustainable, and resilient.
- Inaction will be the costliest and most complicated path in the long-run.
- Developing this Guidance has emphasized the importance of continuing to share evolving knowledge and practices




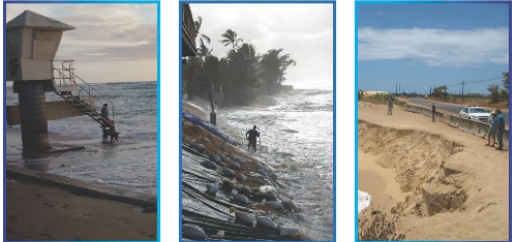
Mahalo!

Brad Romine, Hawai'i Sea Grant
romine@hawaii.edu
seagrant.soest.hawaii.edu

Front Street, Lahaina, Maui
(photo: Don McLeish)



Guidance for Addressing
Sea Level Rise in Community
Planning in Hawai'i



Funding from: NOAA FY16
Regional Coastal Resilience
Grants Program