

HAWAI'I'S HIGH IMPACT ACTIONS TO ADDRESS THE CLIMATE EMERGENCY



INCREASING AMBITION

The upcoming COP26, considered one of the most influential since the Paris Agreement in 2015 is a venue for the US states to help ratchet up ambition. According to the Climate Group, 55% of states and regions with a 2030 emissions reduction target are showing greater ambition than their national counterparts. Massachusetts, Nevada, New York, California, Hawai'i, Washington, Virginia, Oregon, and Maine have all passed legislation to get to 100% carbon-free electricity by at least 2050, something the federal Congress has yet to do.

Staying true to form, Hawai'i is doing what it did with its 100 percent renewable by 2045, and sub zero emissions target (to sequester more than emitted), Hawai'i is the first state to declare a climate emergency (SCR 44) this year.

Hawai'i, as part of the 25-governor US Climate Alliance, is doing its bit and putting forth its own High Impact Actions that will be the next generation of actions to limit warming to 1.5 degrees.

Here, you can see the HI Impact Actions that Hawai'i has committed to, and being taken by Hawai'i's climate commission and its individual members. Such action is being undertaken under the framework of impactful climate legislation at home, and commitments announced for COP26.

We've defined the projects listed here as either "Highlights" or "HI Impact Actions".



HIGHLIGHTS

Our **Highlights** refer to products and accomplishments achieved by departments in regards to progressive climate action in Hawai'i.



HI IMPACT ACTIONS

Our **HI Impact Actions** are what the world should expect from us in the near future as Hawai'i continues to push for effective climate action in our journey towards a climate ready Hawai'i.

**SELECT A CATEGORY TO
SEE HOW HAWAI'I IS
HANDLING ITS
CLIMATE ISSUES!**

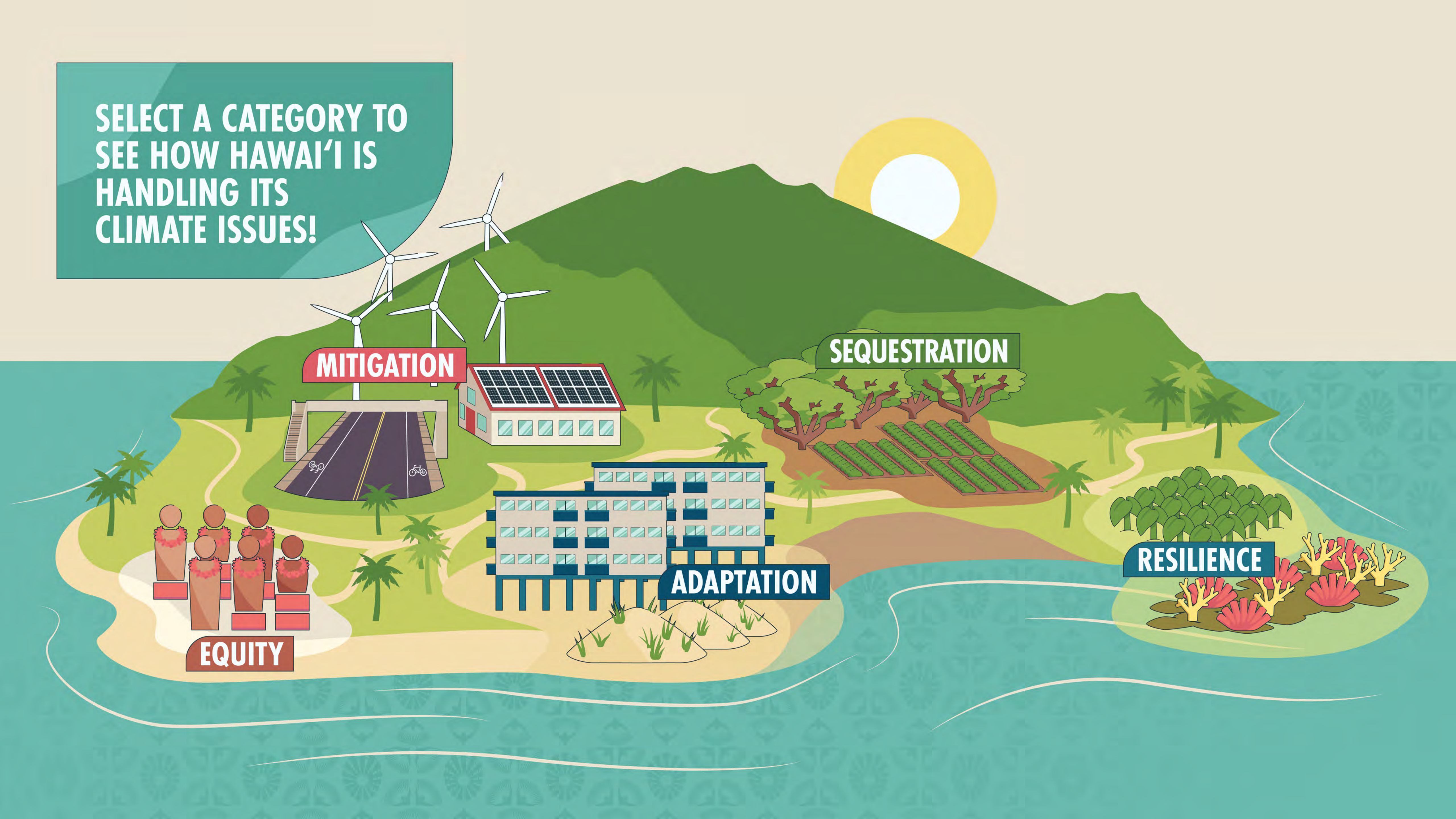
MITIGATION

SEQUESTRATION

ADAPTATION

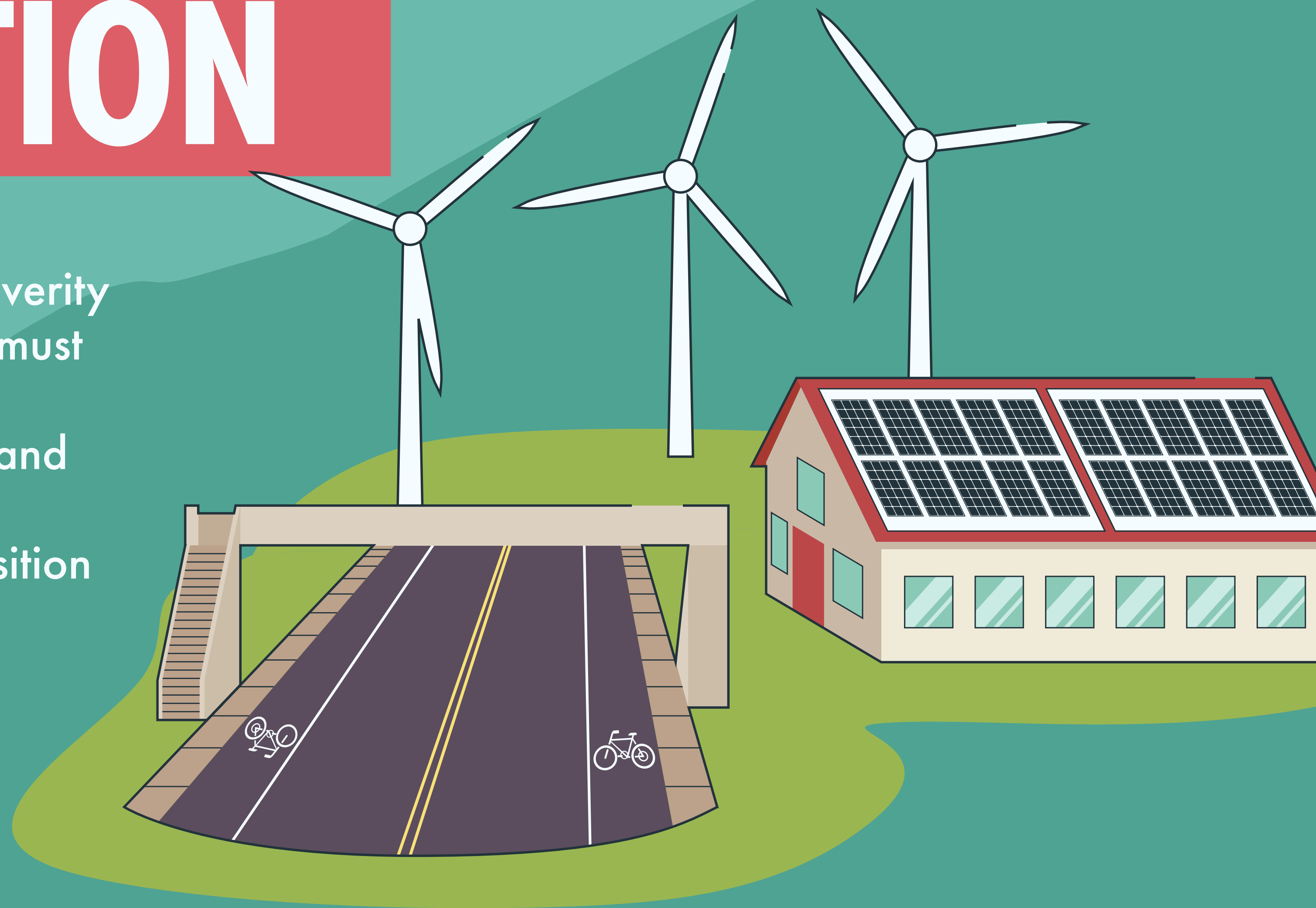
RESILIENCE

EQUITY



MITIGATION

As we work towards reducing the severity of climate change impacts, Hawai'i must decrease the amount of greenhouse gases we emit into the atmosphere, and actively find ways to reduce our dependence on fossil fuels and transition to clean, sustainable energy. The following is what we are doing to mitigate climate change impacts.



MITIGATION ENERGY



Energy Savings Performance contracts to support energy efficiency, renewable energy, energy storage, and the electrification of transportation for Maui County facilities

MAUI COUNTY



Lead by example through energy audit for vehicles, and a digital office

HAWAI'I COUNTY



Invest in energy efficiency and renewable energy for City-owned public housing

CITY AND COUNTY OF HONOLULU



Facilitation of construction of solar farms and Community-Based Renewable Energy projects on Hawaiian Home Lands

DEPT: HAWAIIAN HOME LANDS



Retiring Hawai'i's last coal plant, ending the use of coal in Hawai'i and replacing with renewables

HAWAI'I STATE ENERGY OFFICE



Building electric vehicle charging network for public use at Maui County facilities

MAUI COUNTY



Initiate work with District Offices on neighbor islands to evaluate energy usage, vehicles and transition to renewables

DEPT: HAWAIIAN HOME LANDS



Deep community engagement and partnerships to accelerate the adoption of renewable energy

HAWAI'I STATE ENERGY OFFICE



Obtain funding to resume implementation of a solar panel-covered parking pavilion with electric car charging stations for DHHL's main office in Kapolei

DEPT: HAWAIIAN HOME LANDS

MITIGATION TRANSPORTATION



Lead by example through service contracts to replace internal combustion engine light-duty vehicles with electric vehicles, use of low-carbon materials and construction methods, decarbonization efforts at highways, airports, and harbors

DEPT: TRANSPORTATION



Toolkit addresses strategies to reduce vehicle miles traveled in Hawai'i and increase metrics from other modes, contains best practices, and recommendations

HAWAI'I CLIMATE COMMISSION



Electrification of Transportation pilot program to electrify transit fleets with electric bus purchases for three counties

DEPT: TRANSPORTATION



Providing technical and convening support to county governments to ensure that transit and active transportation plans and projects move forward

DEPT: HEALTH



Working with the Commission to input into toolkit for reducing vehicle miles traveled

KAUA'I COUNTY



Pilot projects to demonstrate and accelerate action: multimodal mobility hubs, use of green infrastructure for highways adaptation

HAWAI'I CLIMATE COMMISSION



Electrification of Transportation, and reducing dependence on oil, for all transportation sectors—ground, aviation, and shipping

HAWAI'I STATE ENERGY OFFICE



Expand electric vehicle charging capacity at City facilities and enable cost recovery to fund additional electric vehicle infrastructure island-wide

CITY AND COUNTY OF HONOLULU



Develop additional dedicated bus lanes along high-occupancy transit corridors

CITY AND COUNTY OF HONOLULU



Building tools and toolkits for reducing Vehicle Miles Traveled, and hiring a Vehicle Miles Traveled Reduction Specialist

DEPT: LAND AND NATURAL RESOURCES



With the Commission, developing toolkit for reducing vehicle miles traveled for Hawai'i

DEPT: HEALTH



With HSEO, replacing existing older diesel vehicles with newer cleaner diesel and/or electric vehicles

DEPT: HEALTH

MITIGATION PLANNING



City's first Climate Action Plan adopted for 2020-2025 for reducing greenhouse gas emissions from the energy (and buildings), transportation, and waste sectors

CITY AND COUNTY OF HONOLULU

[LINK](#)



Implement the City's municipal building energy benchmarking policy and adopt similar benchmarking and transparency ordinance for commercial and multi-family buildings

CITY AND COUNTY OF HONOLULU



Complete the O'ahu Pedestrian Plan and implement the O'ahu Bike Plan in alignment with broader Complete Streets principles and projects

CITY AND COUNTY OF HONOLULU

MITIGATION GREENHOUSE GAS



Published statewide greenhouse gas emissions inventories and projections

DEPT: HEALTH

[LINK](#)



Capping greenhouse gas emissions from large stationary sources through the air permitting process

DEPT: HEALTH

[LINK](#)

MITIGATION INFRASTRUCTURE



Four departments initiated Maui Council's 2018 mandate to address vulnerability to climate change on critical infrastructure

MAUI COUNTY



MITIGATION POLICY FRAMEWORK



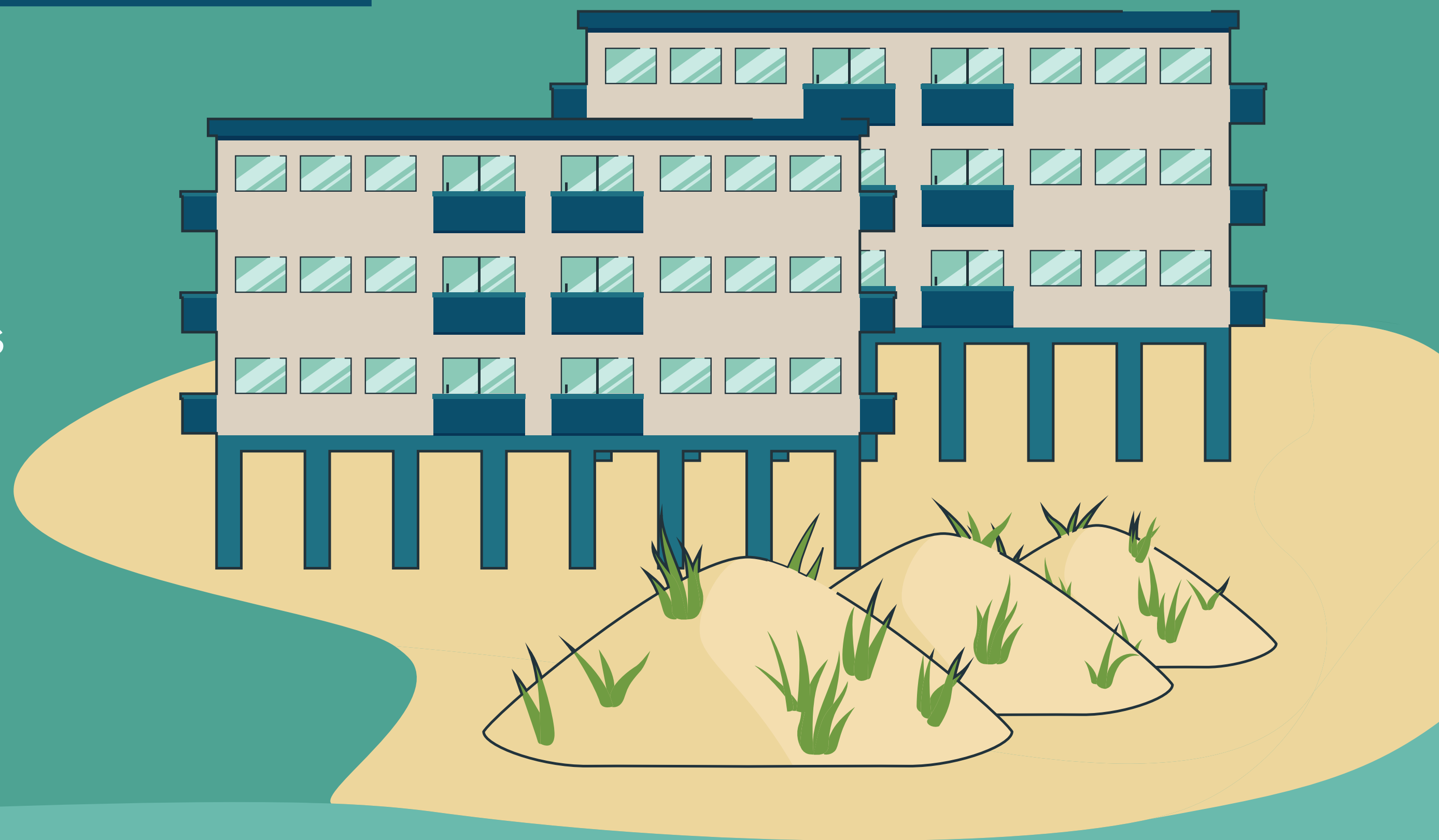
Framing document on Decision Making & Investment Guidance to Address the Climate Emergency in Hawai'i provides guidance to all Hawai'i State and county governments and their agencies on decision making and investments

HAWAI'I CLIMATE COMMISSION

[LINK](#)

ADAPTATION

As we are already experiencing the impacts of climate change in our islands, Hawai'i needs to take a proactive approach to adapt and adjust to the risks the climate crisis poses to our infrastructure and communities. The following is what we are doing to adapt to climate change impacts.



ADAPTATION

SEA LEVEL RISE



Technical memo outlines risks of sea level rise and increased flooding on known chemical contamination in Hawai'i

DEPT: HEALTH

[LINK](#)



Sea level rise guidance and tools for counties to issue permits at the parcel level

DEPT: LAND AND NATURAL RESOURCES

[LINK](#)



Incorporating Sea Level Rise into regulatory tools for the West Kua'i Plan

KAUA'I COUNTY

[LINK](#)



Expand the use of Sea Level Rise Exposure Area to all of Kua'i County

KAUA'I COUNTY



Pilot projects address the impact of sea level rise in Mapunapuna through private-public-community partnerships

CITY AND COUNTY OF HONOLULU



Address climate change-related erosion issues through ordinances and rules, particularly for shoreline setbacks and special management areas

CITY AND COUNTY OF HONOLULU



Sea level rise guidance work to implement disclosure law by providing guidance and background information to realtors and the public

DEPT: LAND AND NATURAL RESOURCES

[LINK](#)



ADAPTATION PLANNING



Coordinated climate adaptation action plan to protect highway facilities and the people who depend on them

DEPT: TRANSPORTATION

[LINK](#)



Developed Draft Climate Adaptation Plan for Hawai'i County

HAWAI'I COUNTY

[LINK](#)



County-wide assessments to climate vulnerabilities

MAUI COUNTY



Plan for shoreline retreat and update rules

MAUI COUNTY



Zoning code updates incorporating climate change aspects

HAWAI'I COUNTY



Launching the Climate Adaptation Plan for Kaua'i County

KAUA'I COUNTY

ADAPTATION INFRASTRUCTURE



Collaborative "One Water" framework incorporated in the planning of all City infrastructure systems

CITY AND COUNTY OF HONOLULU

[LINK](#)



400 cesspool conversions in Priority Areas on Hawaiian Home Lands through workforce development, training and technical assistance

DEPT: HAWAIIAN HOME LANDS

[LINK](#)



Coordinated statewide infrastructure planning for state facilities that are vulnerable to sea level rise, flooding impacts, and natural disasters

OFFICE OF PLANNING AND SUSTAINABLE DEVELOPMENT

ADAPTATION NATURE-BASED SOLUTIONS



Restoring Molokai wetlands; focus on nature-based solutions for Molokai; resilience working paper on ongoing efforts through the Commission

DEPT: HAWAIIAN HOME LANDS

ADAPTATION LEGISLATION



Advocacy for policies and regulations addressing sea level rise and other climate impacts

OFFICE OF HAWAIIAN AFFAIRS



Implementing Climate Ready Hawai'i laws; develop supporting legislation to implement climate ready priority actions

DEPT: LAND AND NATURAL RESOURCES

SEQUESTRATION

As Hawai'i works to actively remove carbon from our atmosphere, we recognize the importance of promoting climate-smart management strategies such as nature-based solutions and regenerative agriculture on our limited land space. The following is some of what we are doing to sequester carbon and GHGs.



SEQUESTRATION

NATURE-BASED SOLUTIONS



1 Trillion Trees Initiative, 30x30 initiative and urban forestry efforts together provide a tangible set of actions to tackle carbon sequestration

DEPT: LAND AND NATURAL RESOURCES

[LINK](#)



US Climate Alliance Natural and Working Lands research team works on the role of carbon sequestration and nature-based resilience to climate mitigation and adaptation

DEPT: LAND AND NATURAL RESOURCES

[LINK](#)



‘Āina Aloha Economic Futures focuses on carbon sequestration, regenerative agriculture and local food production

HAWAI‘I TOURISM AUTHORITY

[LINK](#)



Sustainable management and protection of legacy land portfolio to increase climate change resilience, through watershed protection and maintaining biodiversity, and carbon sequestration

OFFICE OF HAWAIIAN AFFAIRS



A target of one million trees to be planted in the next year

DEPT: LAND AND NATURAL RESOURCES

[LINK](#)

SEQUESTRATION REPORTING

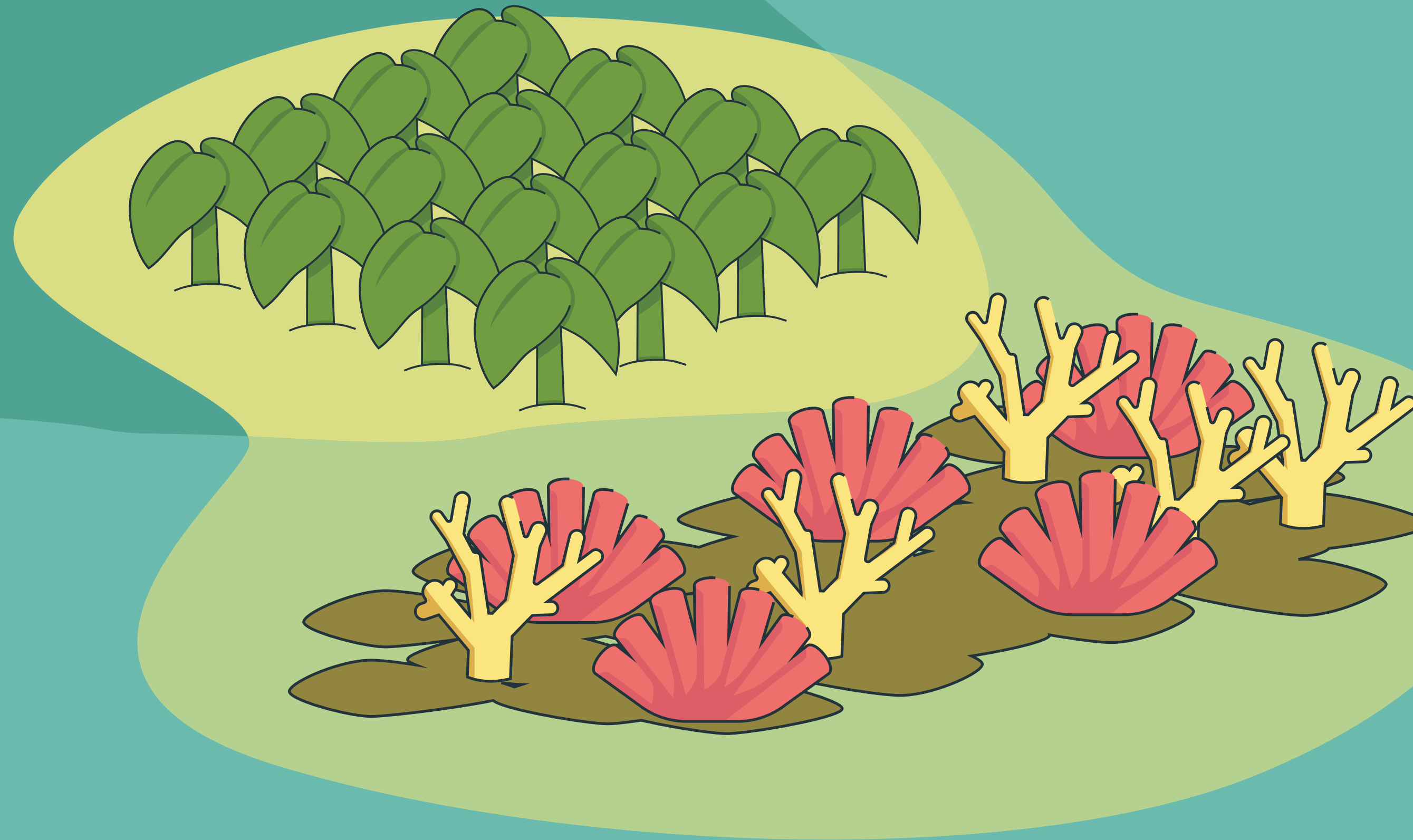


Greenhouse Gas Sequestration Taskforce
report with OPSD, drafting report to the
Legislature and the Climate Commission

DEPT: HEALTH

RESILIENCE

As we work towards a climate ready Hawai'i, we must ensure that our natural ecosystems and communities have the resources they need to withstand the impacts of climate change. From comprehensive and strategic resilience plans to implementation of nature-based solutions, the following is what Hawai'i is doing to be climate ready.



RESILIENCE PLANNING



New Strategic Plan, Mana I Maui Ola, outlines efforts to support pono 'āina property stewardship, applicable advocacy efforts, for the wellbeing of the Hawaiian people, culture, and 'āina

OFFICE OF HAWAIIAN AFFAIRS

[LINK](#)



Division of Aquatic Resources produced the State of Hawai'i's Ocean Acidification Action Plan with the International Alliance to Combat Ocean Acidification

DEPT: LAND AND NATURAL RESOURCES

[LINK](#)



2050 Sustainability Plan highlights climate efforts in Hawai'i

OFFICE OF PLANNING AND SUSTAINABLE DEVELOPMENT

[LINK](#)



Move forward with Community Resilience Planning initiatives, starting with Molokai

DEPT: HAWAIIAN HOME LANDS



Update of the statewide transportation plan to include resiliency and environmental sustainability incorporating greenhouse gas reduction strategies

DEPT: TRANSPORTATION



General plan updates are being bolstered with more climate adaptation, carbon neutral and resilience

HAWAI'I COUNTY

RESILIENCE

NATURE-BASED SOLUTIONS



Collaboratively produced resilience paper highlights actions in Hawai'i that rely on nature-based "green-blue" strategies

HAWAI'I CLIMATE COMMISSION

[LINK](#)



Natural and Working Lands projects: Smart carbon and soil health incentives program; mapping land use and carbon and food security opportunities

DEPT: LAND AND NATURAL RESOURCES

MITIGATION

POLICY FRAMEWORK



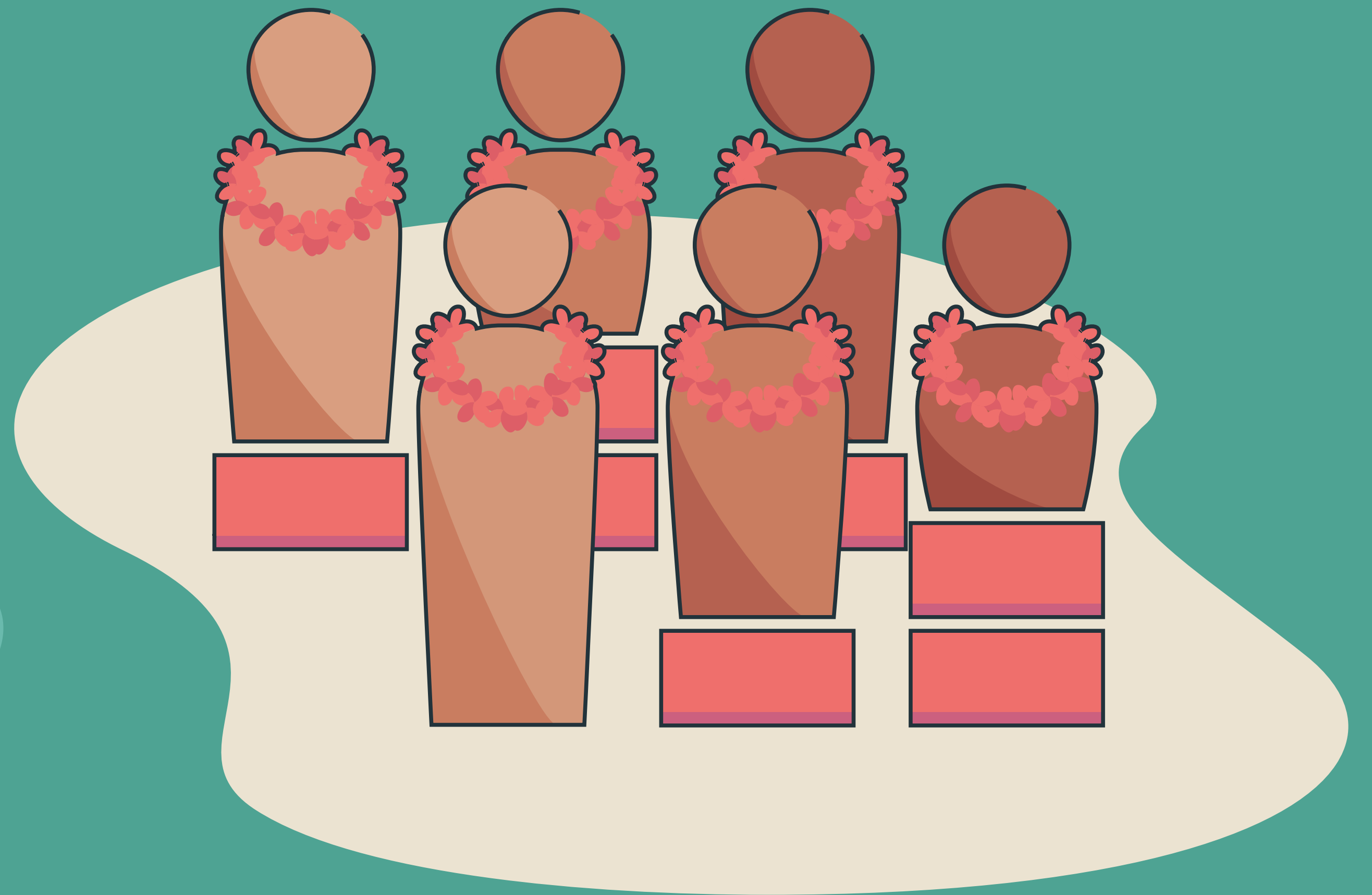
Continue to manage and protect legacy lands, advocate for policies and regulations that increase Native Hawaiian climate change resiliency

OFFICE OF HAWAIIAN AFFAIRS



EQUITY

As climate change impacts disproportionately affect historically low-income and marginalized communities, we must ensure that the progress we make towards a truly clean, equitable and resilient climate ready Hawai'i does not leave anyone behind. The following is what we are doing to work towards an equitable future in the face of climate change.



EQUITY

CAPACITY BUILDING



Grants-to-Projects Bridge lists unfunded State and county resilience and transportation projects

HAWAI'I CLIMATE COMMISSION

[LINK](#)



Provides administrative support and oversight to the Commission staff

DEPT: LAND AND NATURAL RESOURCES



Increasing capacity for climate change work through a ten Climate Ready Hawai'i VISTA team in seven State and county offices

DEPT: LAND AND NATURAL RESOURCES

[LINK](#)



Expand capacity for all offices to do climate change work, through the hiring of specialists, expansion of the VISTA program, technical assistance, and external grants

HAWAI'I CLIMATE COMMISSION

EQUITY

SOCIAL VULNERABILITY ASSESSMENT



Statewide climate and social vulnerability framework briefing paper details existing geospatial social vulnerability, O'ahu-specific climate vulnerability, poverty, and energy burden index tools

HAWAI'I CLIMATE COMMISSION

[LINK](#)



Develop a statewide social and climate vulnerability framework to address equity in developing and implementing climate policy

DEPT: LAND AND NATURAL RESOURCES



Community-level climate change vulnerability assessments that outline current conditions, specific geography and impacting factors

OFFICE OF HAWAIIAN AFFAIRS



Develop a Hawai'i-specific Climate and Health Profile Report to assess scope and risks of climate change

DEPT: HEALTH



Conduct Phase 2 of the social and climate vulnerability framework

HAWAI'I CLIMATE COMMISSION