



Hubs in Hawai'i

Enhancing Mobility and Resilience
for a Clean and Equitable Future

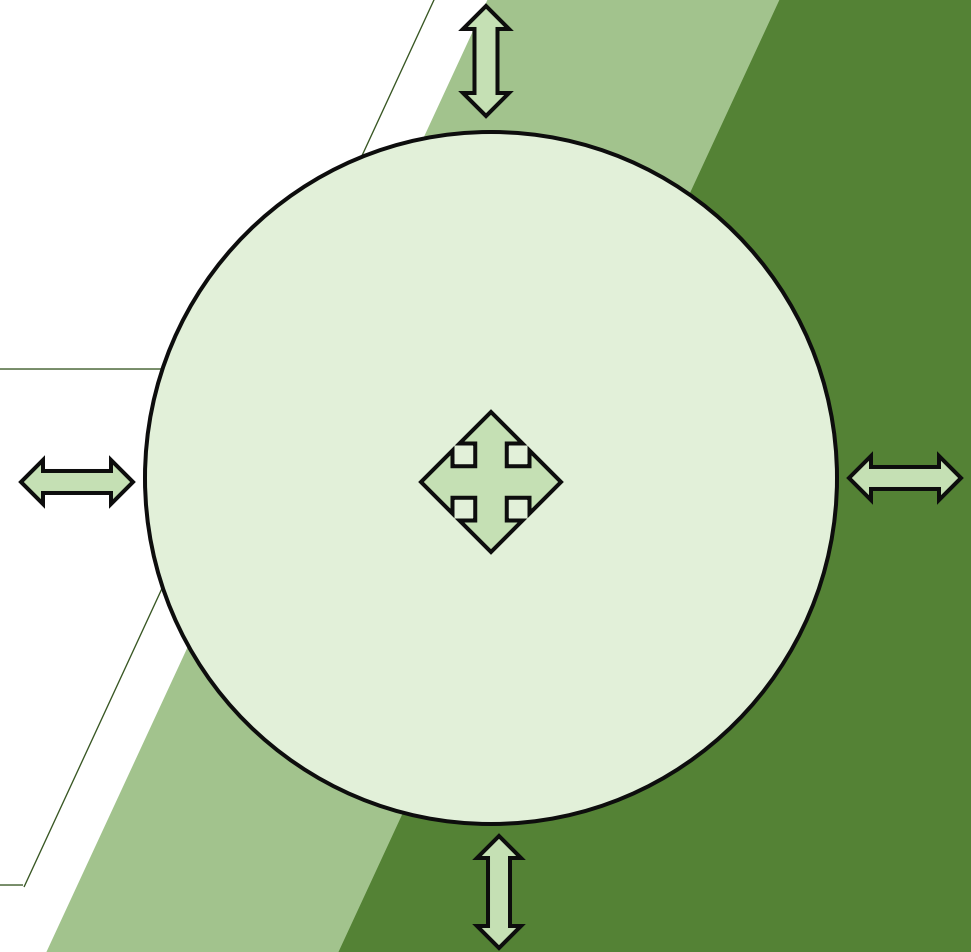
Think Tech Hawai'i Code Green

Parker Kushima

Transportation Affordability Specialist

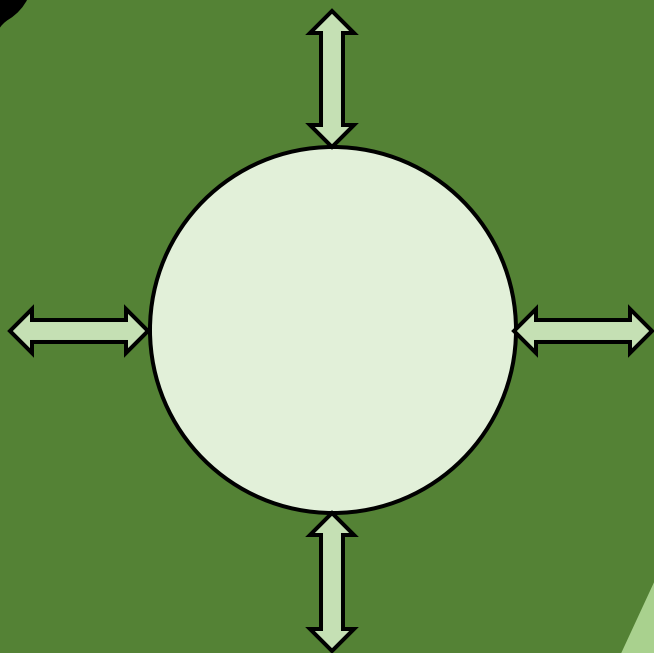
Hawai'i State Energy Office and
Climate Ready Hawai'i VISTA

November 8, 2021

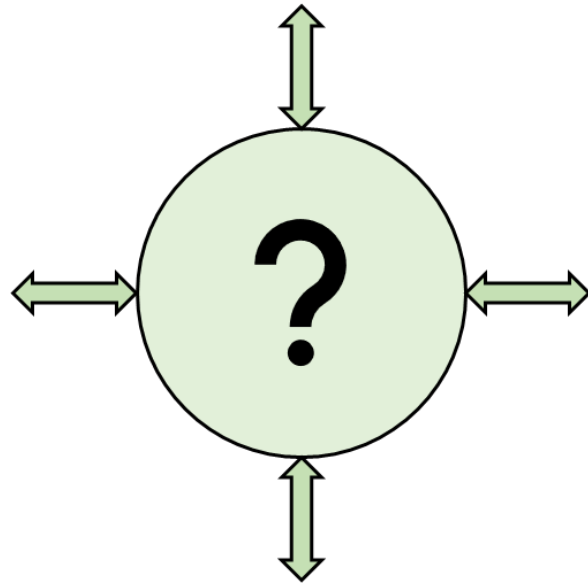


What is a Hub?

What is a Hub?



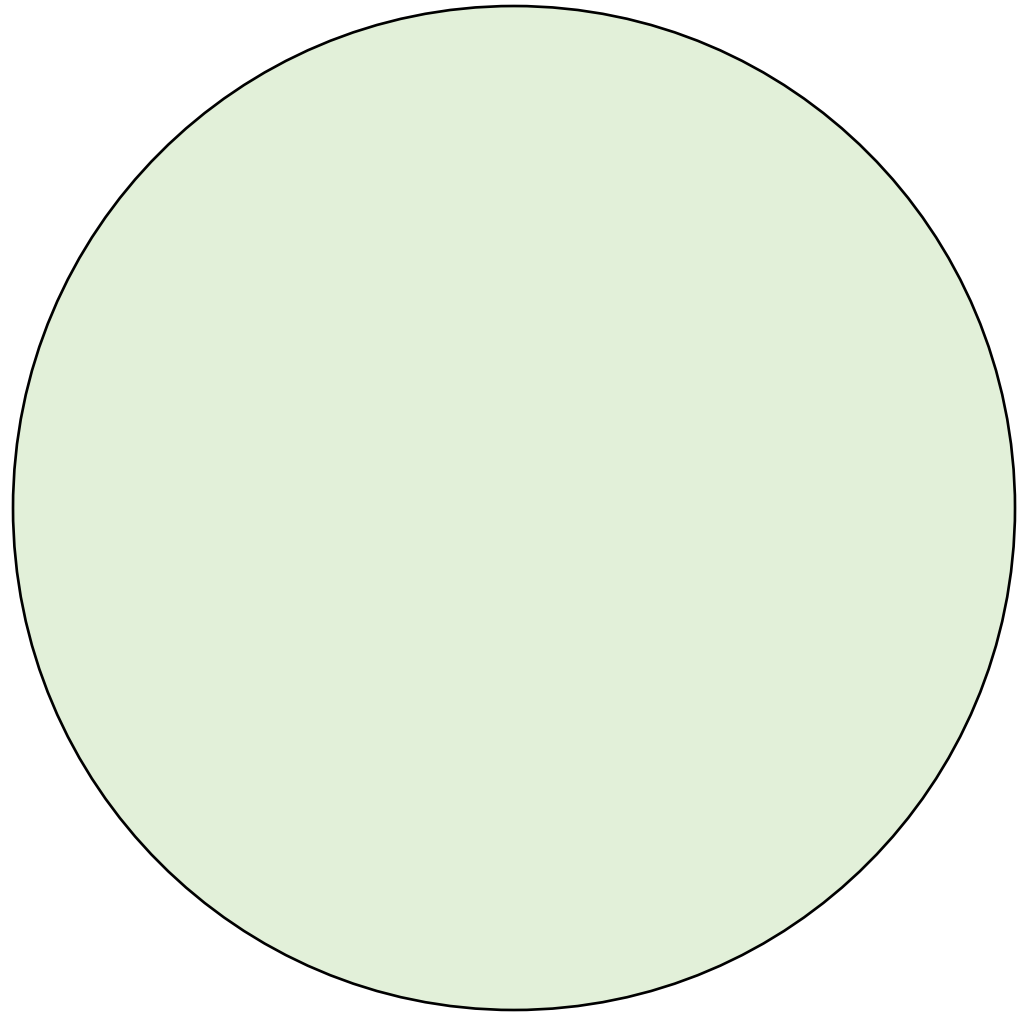
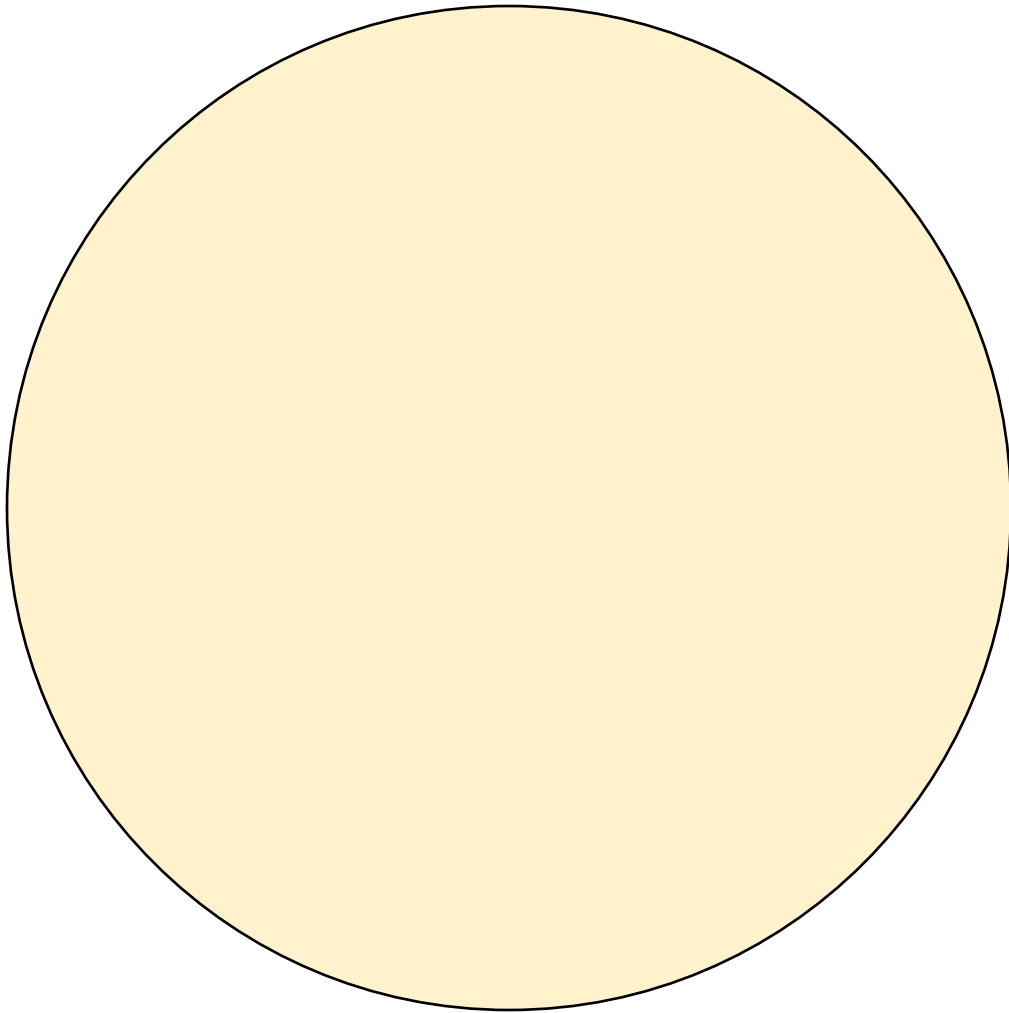
- Centralized, accessible locations that combine necessary amenities and services to best serve specific community needs
- Hub and spoke
- Community-informed, context-sensitive
- Trusted, safe, and welcoming spaces
- Tell stories about a location while providing benefits and advancing goals



- Centralized, accessible locations that combine necessary amenities and services to best serve specific community needs
- Hub and spoke
- Community-informed, context-sensitive
- Trusted, safe, and welcoming spaces
- Tell stories about a location while providing benefits and advancing goals
- Equity is at the heart of Hub design



Types of Hubs



Mobility Hubs

- Locations which provide convenient access to multiple transportation modes and related amenities to support safe multimodal travel
- Potential elements:
 - Electric transit, accessible pedestrian infrastructure, micromobility, electric vehicle charging, car-/ride-share
 - Waiting spaces, wayfinding, wifi, retail, housing
- Supports active and multimodal transportation
- Design philosophies from programs such as Complete Streets, Safe Routes to Schools, and Vision Zero

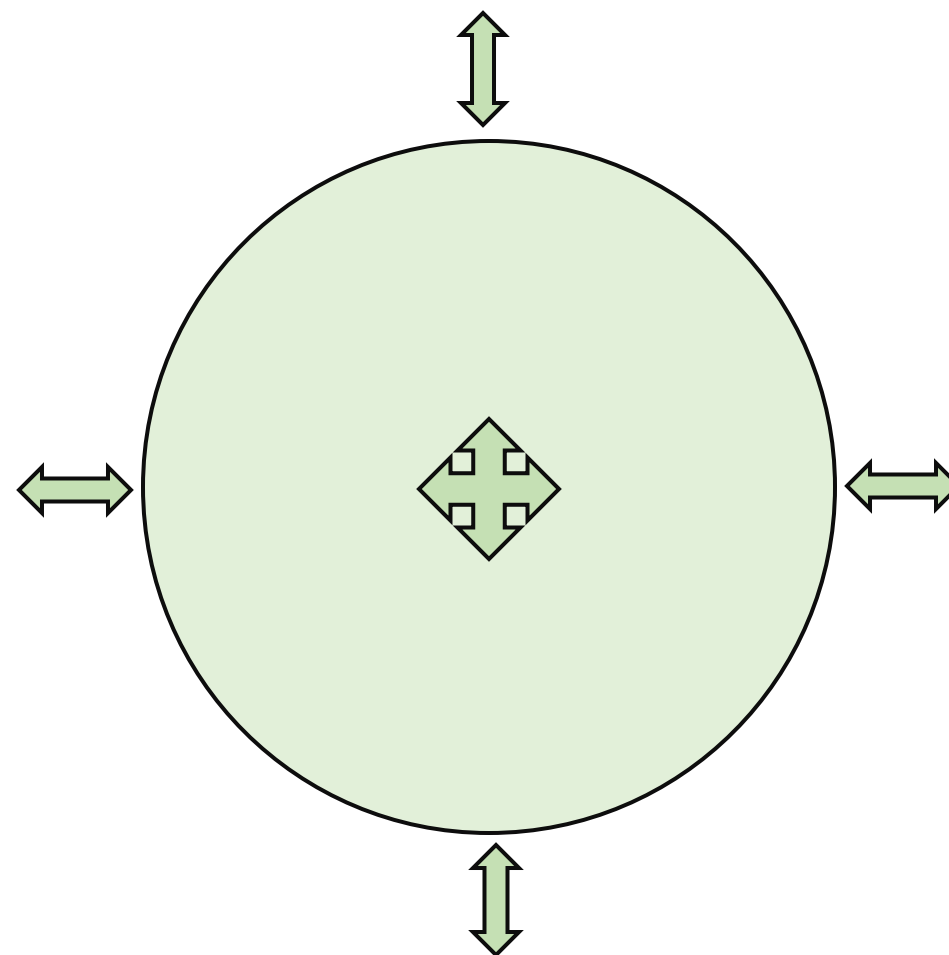


Resilience Hubs

- “Community-serving facilities augmented to support residents and coordinate resource distribution and services before, during, or after a disruption” – USDN
- Often built around established, trusted community spaces
- Potential elements:
 - Renewable electricity, resource distribution, medical, information and communication, logistical coordination
- Strengthen communities in disaster scenarios and everyday “normal” life

Mobility x Resilience

- Mobility is an element of Resilience, and Resilience is an element of Mobility
- Creative cost- and space-efficient designs
- Wholistically serve all community needs
- Requires cross-sector collaboration
- Broader term: Community Hubs



Modularity

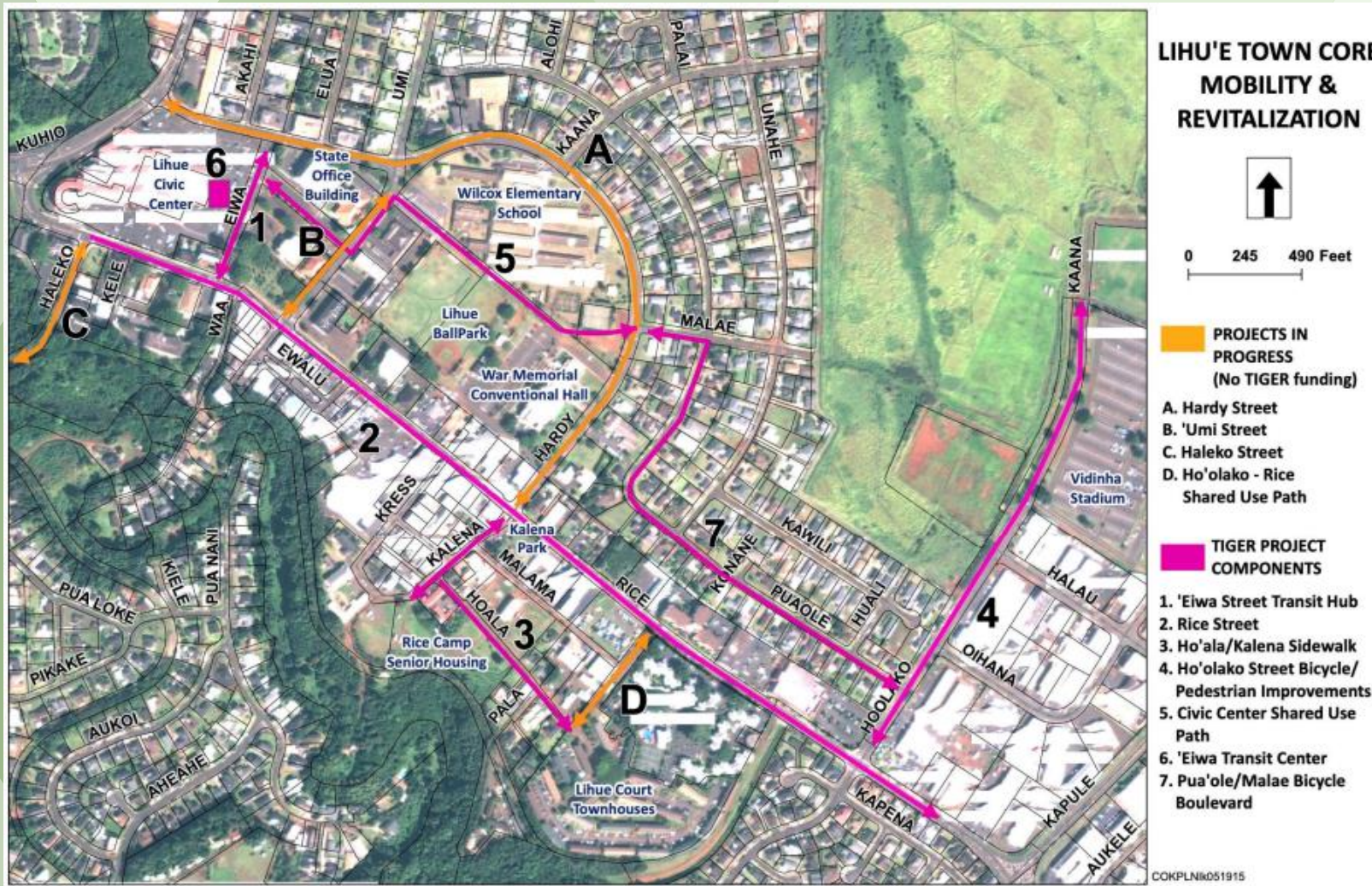


Hele On Master Plan

Scale



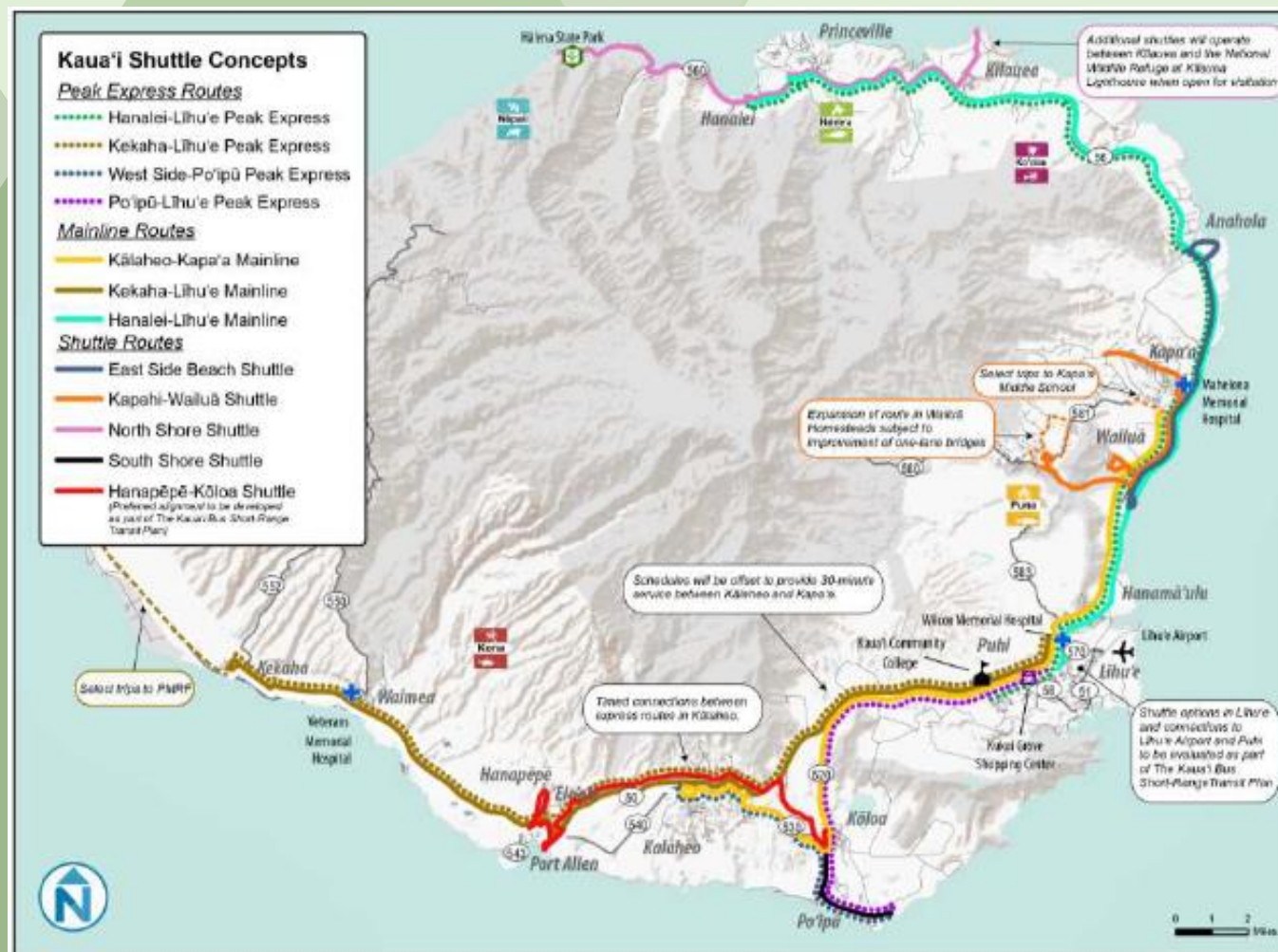
Hubs in Hawai'i



Līhu'e Civic Center Mobility Plan

Conceptual Mobility Map

County of Kaua'i – Līhu'e Civic Center Redevelopment Plan Presentation

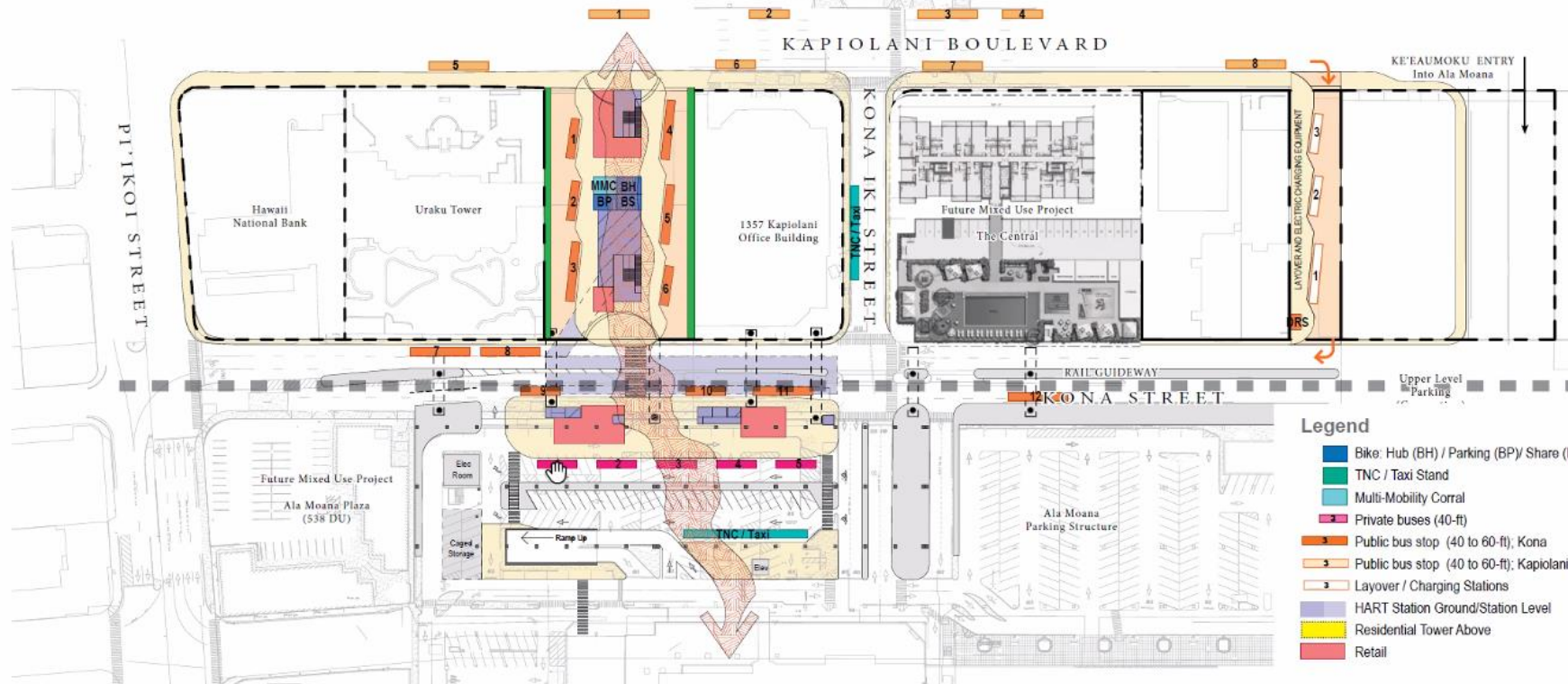


North Shore Shuttle Plan

Conceptual Shuttle Route Map

County of Kauaʻi – Paradigm Shift on Kauaʻi's North Shore Presentation

| | | |
|--|--|---|
| <div data-bbox="433 78 586 249" data-label="Text"> <h1>A</h1> </div> | <div data-bbox="649 57 1082 107" data-label="Section-Header"> <p>Parcel 1 Integrated Rail and Bus Plaza on Parcel 1</p> </div> <div data-bbox="649 121 1656 278" data-label="List-Group"> <ul style="list-style-type: none"> • Station touch down location per 2017 plan • Mid-block plaza lined with retail from Kapiolani Boulevard to Kona Street <ul style="list-style-type: none"> • Potential for concourse level plaza that cross Kapiolani Boulevard • Integrated transit station bus transit hub • Private bus hub and Taxi/TNC within Ala Moana Parking Structure and on Kona Iki Street • 8 bus stops on Kapiolani Boulevard <ul style="list-style-type: none"> • Handivan stop fronting Parcel 1 (#6) • 12 bus stops; 6 on Parcel 1; 6 on Kona Street <ul style="list-style-type: none"> • Handivan stop on Parcel 1 (#6) • No residential development </div> | <div data-bbox="1681 57 2127 107" data-label="Section-Header"> <p>Parcel 3 Layover Bus Stop and Driver Rest Station</p> </div> <div data-bbox="1681 121 2127 178" data-label="List-Group"> <ul style="list-style-type: none"> • 3 layover bus stops with electric charging equipment • Driver rest station </div> |
|--|--|---|



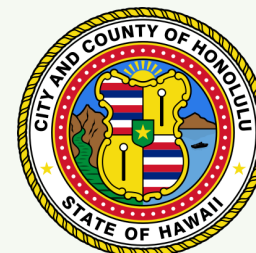
KALIA MOBILITY PLAZA

INTEGRATED TRANSIT CENTER (RAIL AND BUS) ON PARCEL 1

Scale: 1"=100'

Tier 2 Alternatives Diagrams
04/13/2021

02



Kalia Transit Mobility Plaza Conceptual Alternative Design

City and County of Honolulu – Honolulu Complete Streets



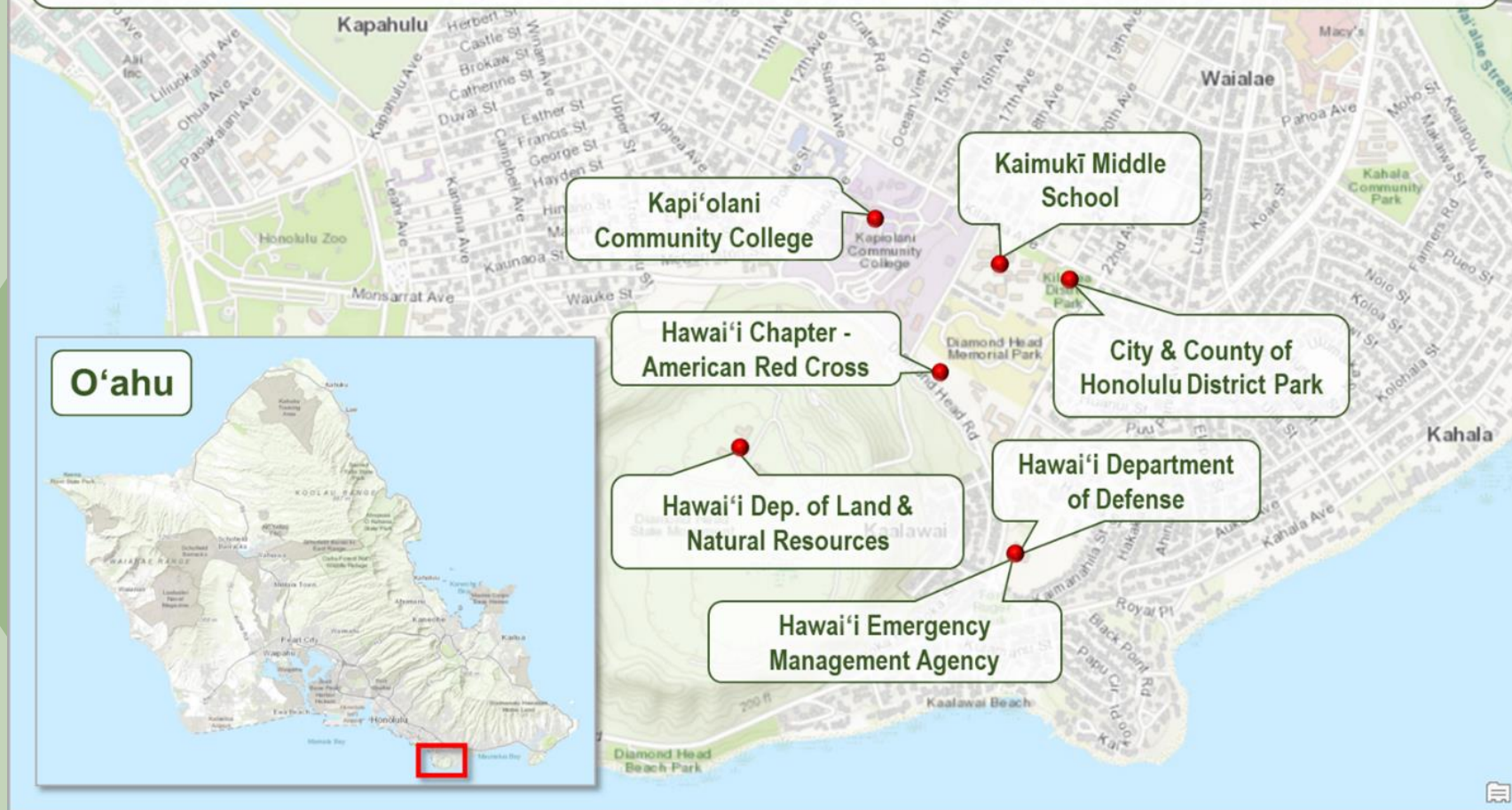
Kalauao Bus Transit Center and Mobility Hub

Conceptual Design Illustration

City and County of Honolulu – Honolulu Complete Streets

Diamond Head Post-Disaster Energy Back-up & Response Working Group

Partners with Significant Adjacent Disaster Response Resources



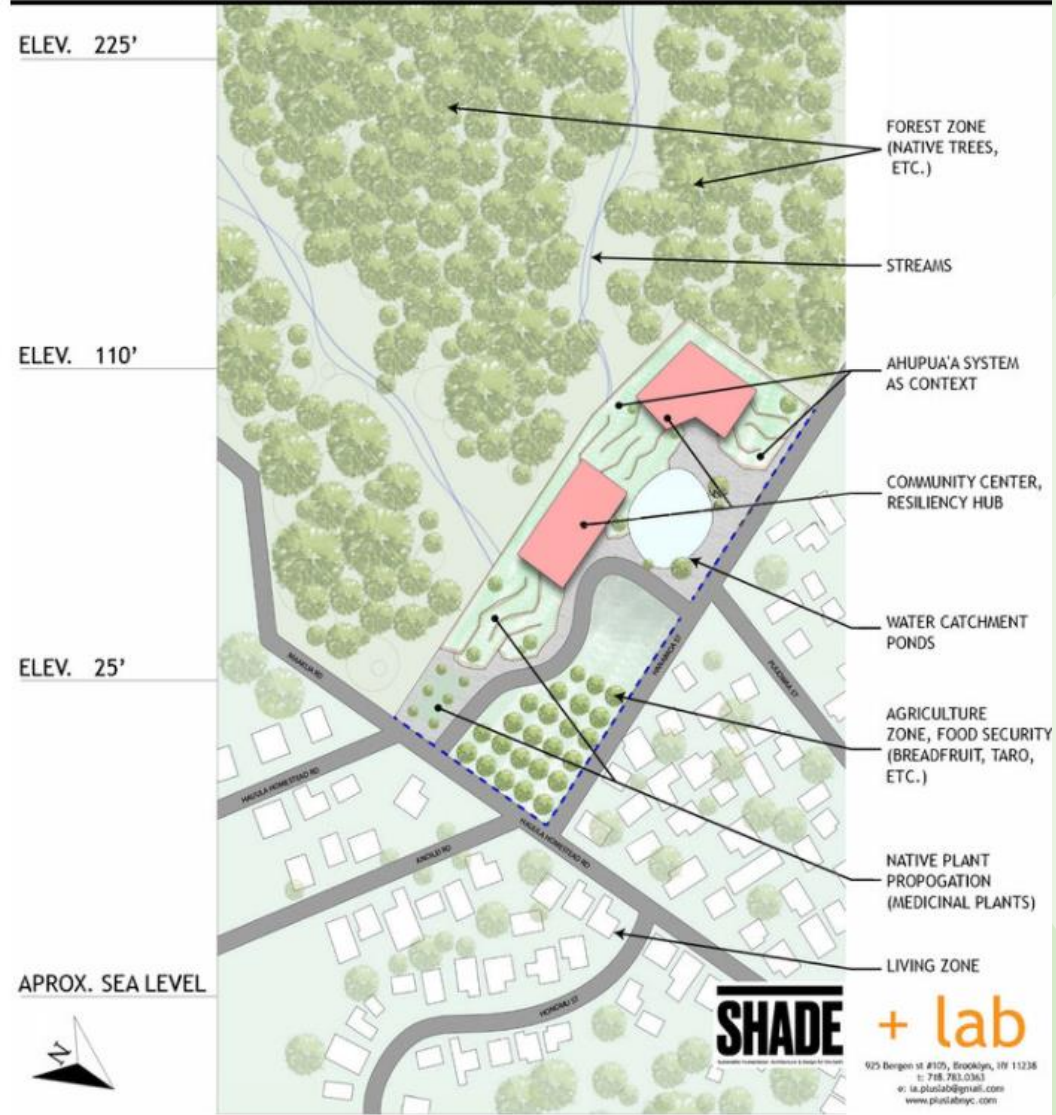
Kaimukī Middle School Microgrid Project

Map of Adjacent Disaster Response Partners

Kapi'olani Community College – Diamond Head Post-Disaster
Energy Back-up & Response Working Group



54-256 HAU'ULA HOMESTEAD RD - SITE PROPOSAL



Ko'olauloa Community Resilience Hub

Site Proposal

SHADE Group and Hui O Hau'ula

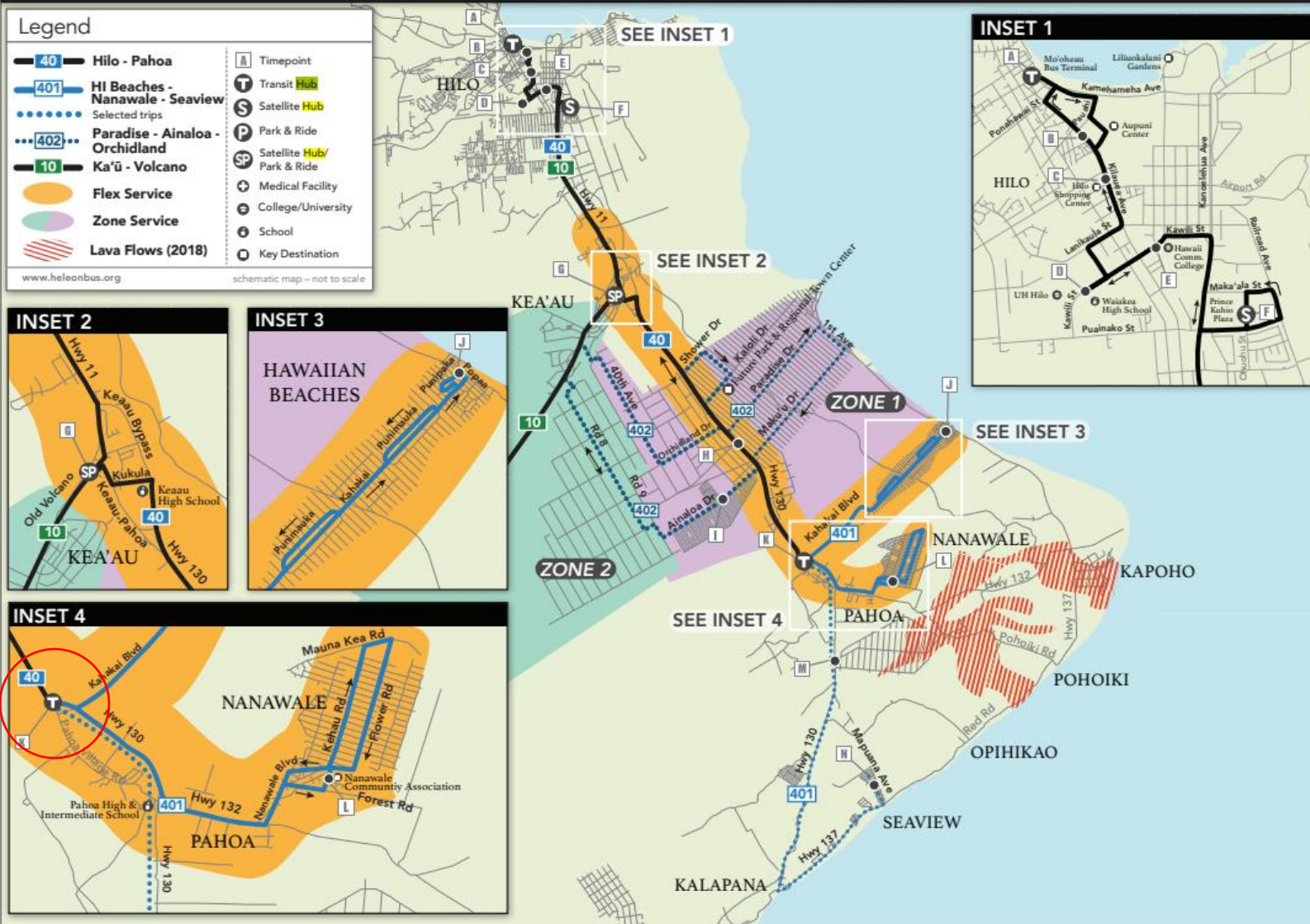


Kahului Transit Hub

Proposed Location near Kane/Vevau Intersection

Maui MPO – Hele Mai Maui Long Range Transportation Plan 2040

Hele On Bus Route - #40 - Hilo-Pahoa



Pāhoā Transit Hub

Hele On Bus Routes and Proposed Hub Location

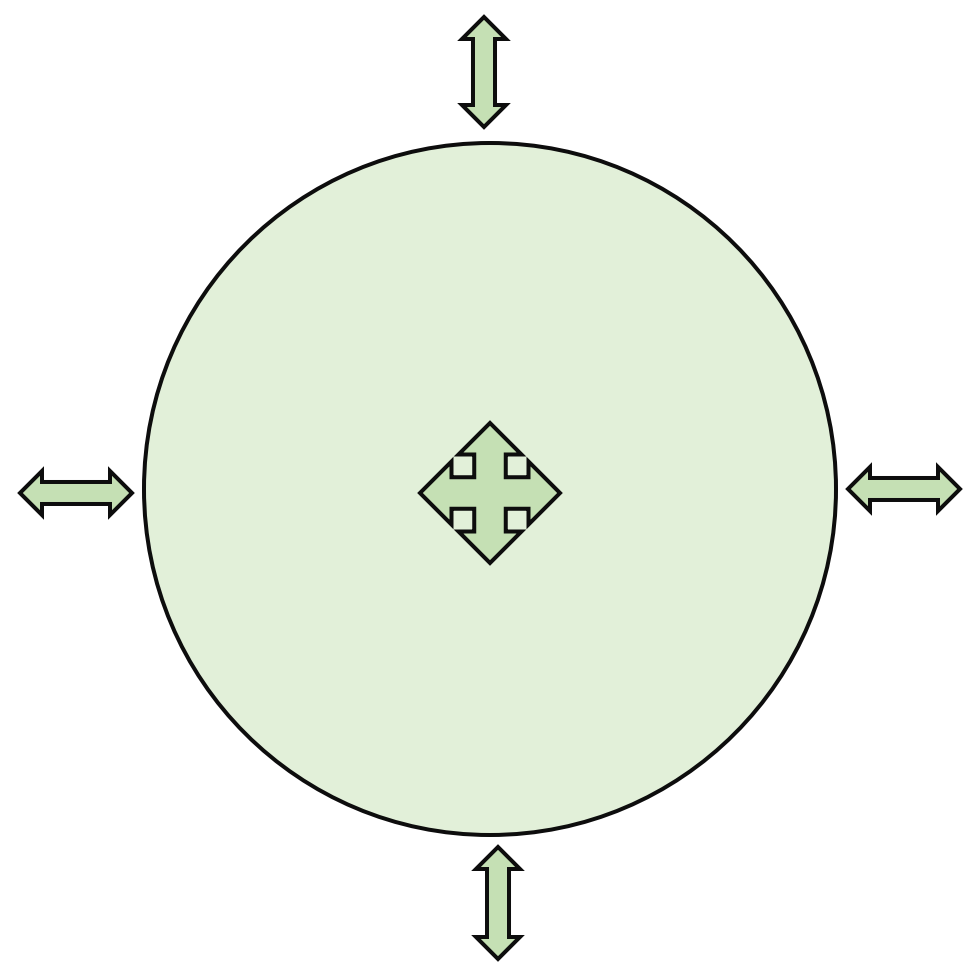
County of Hawai'i – Hele On Transit and Multimodal Transportation Master Plan



The Potential of Hubs in Hawai'i



Potential of Hubs in Hawai'i



Mahalo!



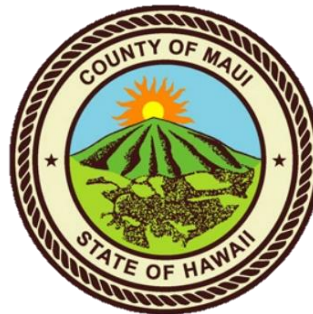
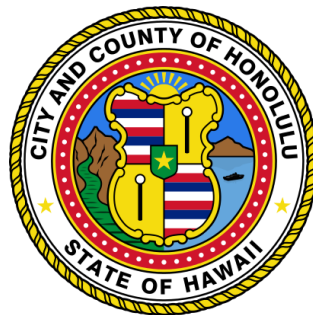
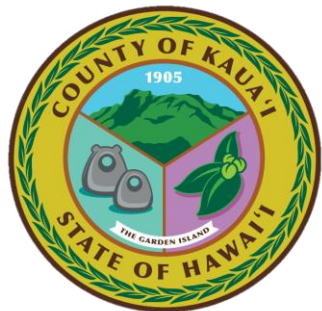
UNIVERSITY of HAWAII
KAPI'OLANI
COMMUNITY COLLEGE



Maui Metropolitan
Planning Organization



Hawai'i Interagency Council for
Transit-Oriented Development



Mahalo!
