



Urban & Community Forestry Program



Heather McMillen, PhD
Forester, ISA Certified Arborist

Brayden Aki
GIS Technician



www.Kaulunani.org

@Kaulunani



Heather.l.mcmillen@hawaii.gov

Support all of Hawaii's communities to cultivate wellbeing and resilience through planting, caring for and growing relationships with the trees and forests that we live with and that are crucial to the ecosystems on which we rely.

MISSION

Urban & Community Forestry Program



www.Kaulunani.org

@Kaulunani



Heather.l.mcmillen@hawaii.gov

What is an Urban Forest?



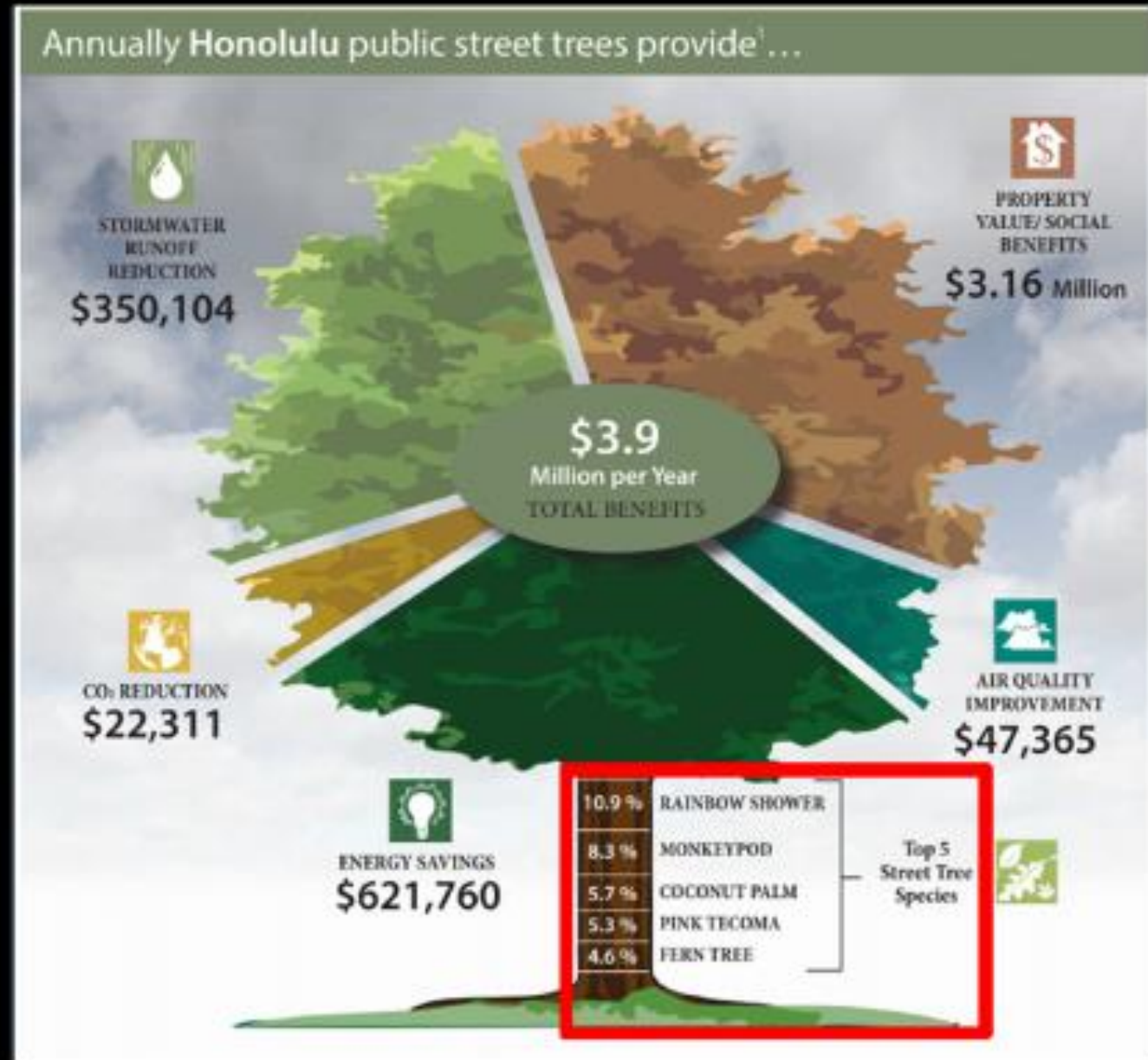
Urban and Community Forestry in Hawai'i



Photos:
Hālau 'Ōhi'a,
DLNR, Elyse
Butler

Trees are Infrastructure

\$1 paid to maintain trees
\$3 return on investment



TREES IMPROVE



HUMAN HEALTH



ECONOMIC
DEVELOPMENT



WATER QUALITY



AIR QUALITY



PUBLIC SAFETY



EQUITY



TRANSPORTATION



EDUCATION



CITY PLANNING



SMART CITIES
TECH



URBAN WOOD
REUSE



RESILIENCE

Hawaii's Tree Canopy Viewer

- Statewide, all land-use types
- Canopy data
 - Raster 1-meter resolution
 - MAXAR VIVID & LiDAR Imagery 2013-2020
 - Available for download
- Socio-demographic and health data



Hawaii's Tree Canopy Viewer

- Statewide, all land-use types
- Canopy data
 - Raster 1-meter resolution
 - MAXAR VIVID & LiDAR Imagery 2013-2020
 - Available for download
- Socio-demographic and health data

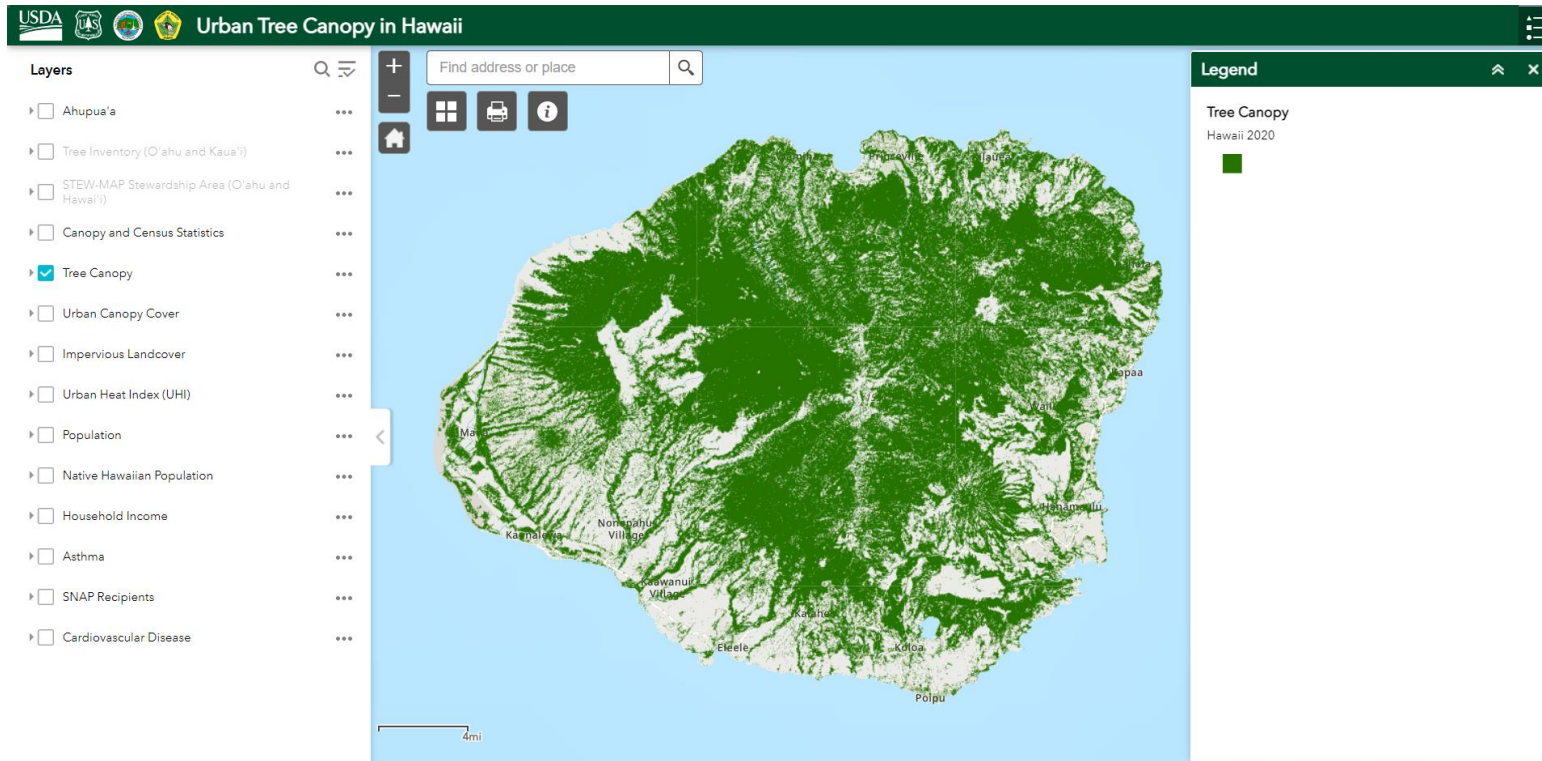


Hawaii's Tree Canopy Viewer Layers

- Tree Canopy Raster
- Urban Canopy Cover
- Urban Heat Index
- Impervious Landcover
- Ahupua'a
- Population
- Native Hawaiian Population

- Median Household Income
- SNAP Recipients
- Asthma Incidence
- Cardiovascular Disease Incidence
- Citizen Forester Tree Inventory (limited)
- Stewardship Areas (limited)

What can the Tree Canopy Viewer Do?



- Visualize location and extent of canopy
- Inform prioritization of tree projects
 - Maximizes benefits that trees provide
 - Pathway to equitable benefits



Urban Tree Canopy in Hawaii



Layers

- ☐ Ahupua'a
- ☐ Tree Inventory (O'ahu and Kaua'i)
- ☐ STEW-MAP Stewardship Area (O'ahu and Hawai'i)
- ☐ Canopy and Census Statistics
- ☐ Tree Canopy
- ☒ Urban Canopy Cover
- ☐ Impervious Landcover
- ☐ Urban Heat Index (UHI)
- ☐ Population
- ☐ Native Hawaiian Population
- ☐ Household Income
- ☐ Asthma
- ☐ SNAP Recipients
- ☐ Cardiovascular Disease



Recreation Area

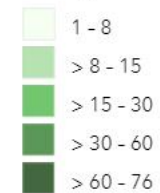
Regional

1mi

Legend

Urban Canopy Cover

% Canopy Cover within Urban Areas



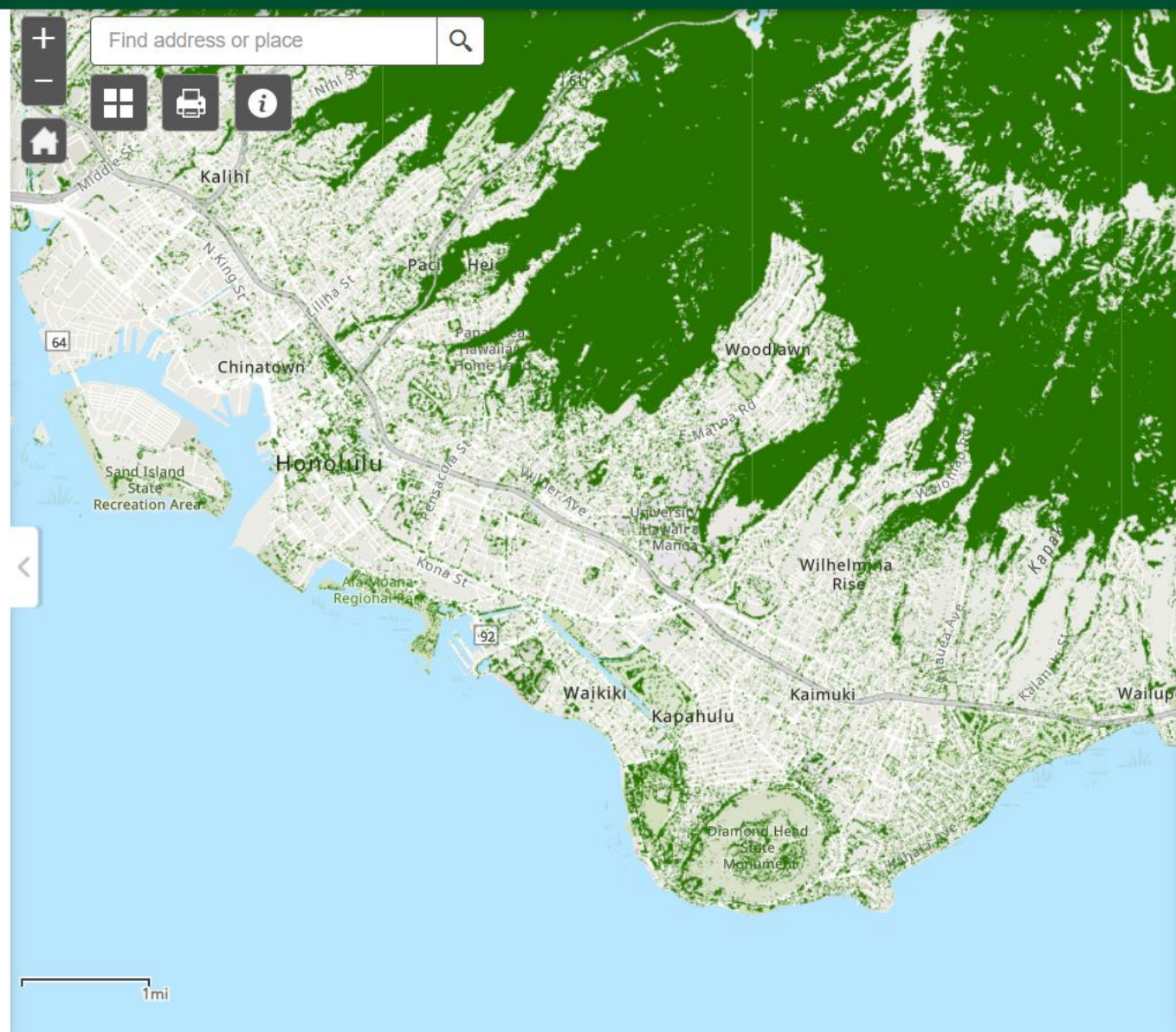


Urban Tree Canopy in Hawaii



Layers

- ☐ Ahupua'a
- ☐ Tree Inventory (O'ahu and Kaua'i)
- ☐ STEW-MAP Stewardship Area (O'ahu and Hawai'i)
- ☐ Canopy and Census Statistics
- ☒ Tree Canopy
- ☐ Urban Canopy Cover
- ☐ Impervious Landcover
- ☐ Urban Heat Index (UHI)
- ☐ Population
- ☐ Native Hawaiian Population
- ☐ Household Income
- ☐ Asthma
- ☐ SNAP Recipients
- ☐ Cardiovascular Disease



Legend

Tree Canopy

Hawaii 2020



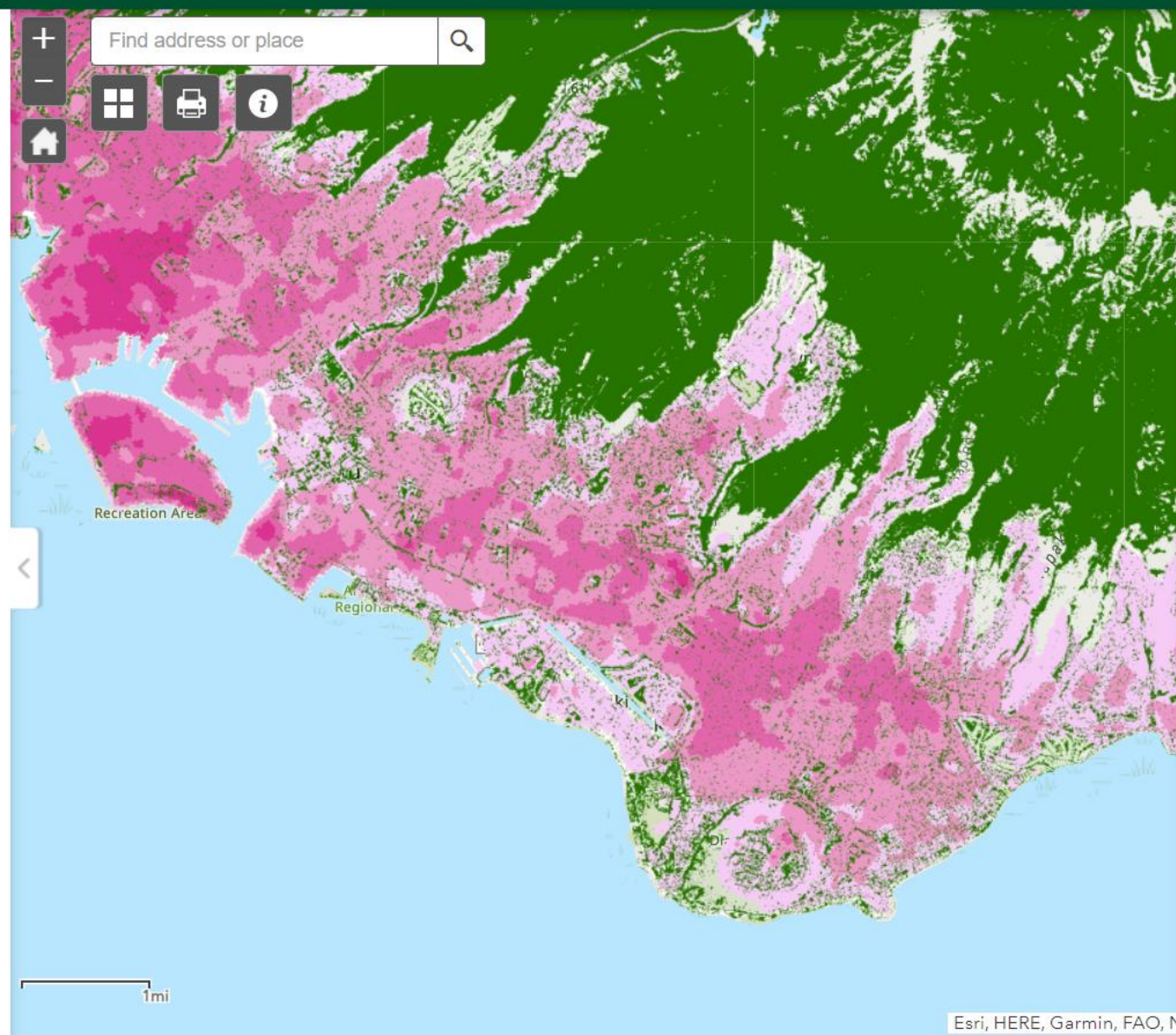


Urban Tree Canopy in Hawaii



Layers

- ☐ Ahupua'a
- ☐ Tree Inventory (O'ahu and Kaua'i)
- ☐ STEW-MAP Stewardship Area (O'ahu and Hawai'i)
- ☐ Canopy and Census Statistics
- ☒ Tree Canopy
- ☐ Urban Canopy Cover
- ☐ Impervious Landcover
- ☒ Urban Heat Index (UHI)
- ☐ Population
- ☐ Native Hawaiian Population
- ☐ Household Income
- ☐ Asthma
- ☐ SNAP Recipients
- ☐ Cardiovascular Disease



Legend

Tree Canopy

Hawaii 2020



Urban Heat Index (UHI)

Hawaii Cities Heat Severity 2020

Value

- Mild
- Mild to Moderate
- Moderate
- Moderate to High
- Severe

Esri, HERE, Garmin, FAO, N

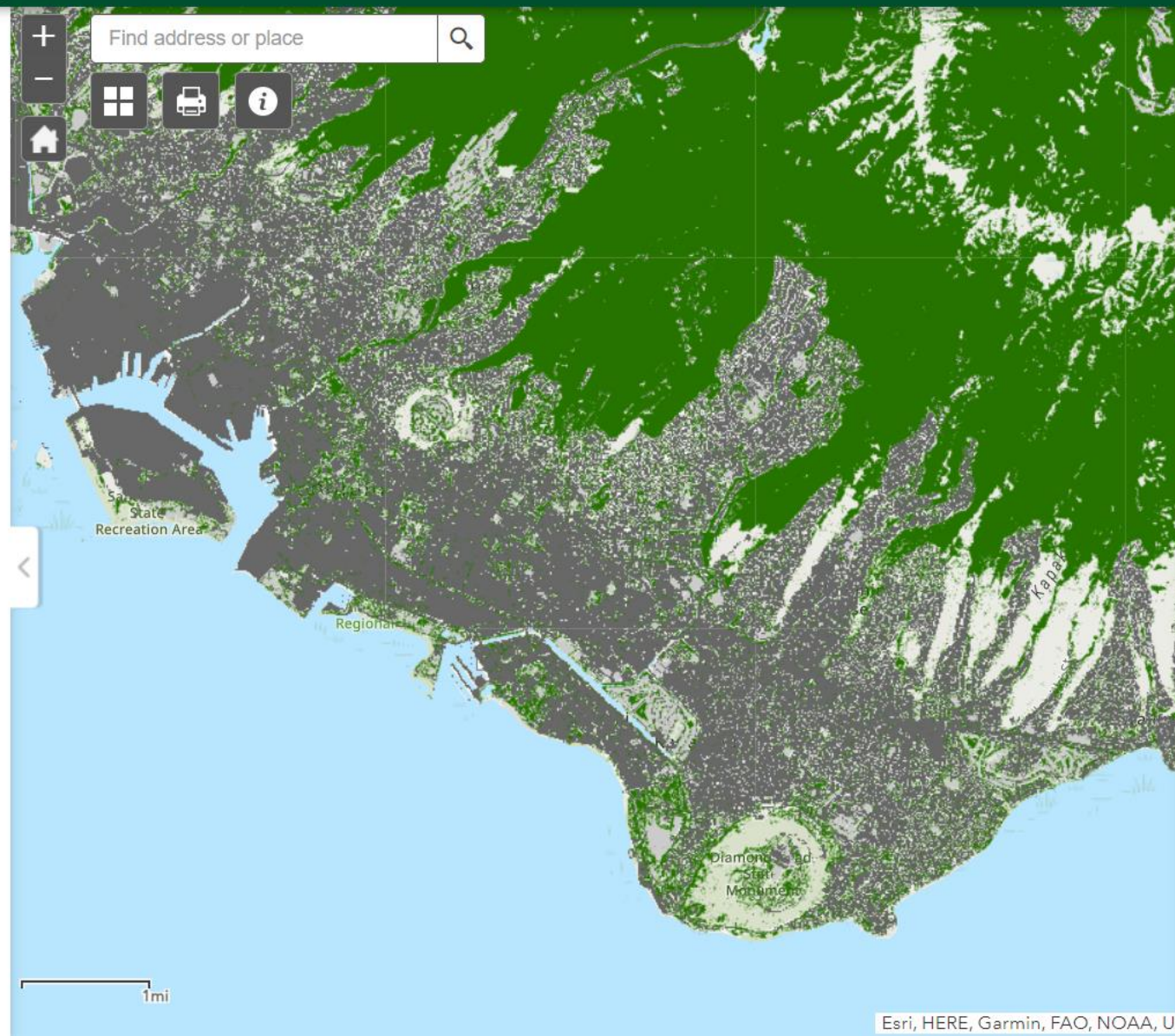


Urban Tree Canopy in Hawaii



Layers

- ☐ Ahupua'a
- ☐ Tree Inventory (O'ahu and Kaua'i)
- ☐ STEW-MAP Stewardship Area (O'ahu and Hawai'i)
- ☐ Canopy and Census Statistics
- ☒ Tree Canopy
- ☐ Urban Canopy Cover
- ☒ Impervious Landcover
- ☐ Urban Heat Index (UHI)
- ☐ Population
- ☐ Native Hawaiian Population
- ☐ Household Income
- ☐ Asthma
- ☐ SNAP Recipients
- ☐ Cardiovascular Disease



Legend

Tree Canopy

Hawaii 2020



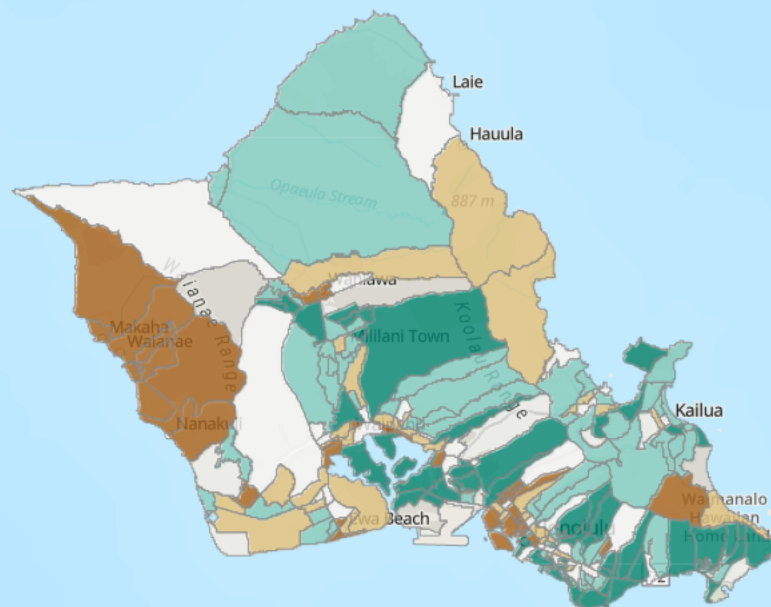


Urban Tree Canopy in Hawaii



Layers

- ☐ Ahupua'a
- ☐ Tree Inventory (O'ahu and Kaua'i)
- ☐ STEW-MAP Stewardship Area (O'ahu and Hawai'i)
- ☒ Canopy and Census Statistics
- ☐ Tree Canopy
- ☐ Urban Canopy Cover
- ☐ Impervious Landcover
- ☐ Urban Heat Index (UHI)
- ☐ Population
- ☐ Native Hawaiian Population
- ☐ Household Income
- ☐ Asthma
- ☒ SNAP Recipients
- ☐ Cardiovascular Disease



O'ahu

10mi

Legend

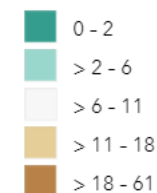


Canopy and Census Statistics



SNAP Recipients

% Receiving SNAP (est. 2015 - 2020)





Urban Tree Canopy in Hawaii



Layers



- ☐ Ahupua'a
- ☐ Tree Inventory (O'ahu and Kaua'i)
- ☐ STEW-MAP Stewardship Area (O'ahu and Hawai'i)
- ☒ Canopy and Census Statistics
- ☐ Tree Canopy
- ☐ Urban Canopy Cover
- ☐ Impervious Landcover
- ☐ Urban Heat Index (UHI)
- ☐ Population
- ☐ Native Hawaiian Population
- ☐ Household Income
- ☐ Asthma
- ☒ SNAP Recipients
- ☐ Cardiovascular Disease

Native Hawaiian Population (est. 2010)		1,293
% Native Hawaiian		44.2
Life Expectancy (est. 2010-2015)		78
Median Household Income (est. 2015-2019)		56,705
% SNAP (est. 2015-2019)		30
% Asthma Rate (est. 2018)		10.8
% Cardiovascular Disease (est. 2018)		5.9
Acres		13,512
Acres - canopy (entire tract)		5,406
Acres - Urban Areas		681
Acres - Urban Canopy		139
% Canopy Cover within Urban Areas		20
% Canopy Cover by entire tract		40
Zoom to		...

Legend



Canopy and Census Statistics



SNAP Recipients

% Receiving SNAP (est. 2015 - 2020)

- 0 - 2
- > 2 - 6
- > 6 - 11
- > 11 - 18
- > 18 - 61

O'ahu

10mi

3 – 30 – 300

URBAN CANOPY TARGET

3

**Trees (of a decent size)
visible from every home.**

30

**Percent tree canopy
cover in neighborhood.**

300

**Meters from nearest
park or green space.**

Konijnendijk van den Bosch, C. (2021). Promoting health and wellbeing through urban forests – Introducing the 3-30-300 rule.



Cecil Konijnendijk



**NATURE BASED
SOLUTIONS**
INSTITUTE

HONOLULU

URBAN CANOPY TARGET

35% by **2035**



URBAN CANOPY C O V E R A G E

84%

HAWAII RESIDENTS

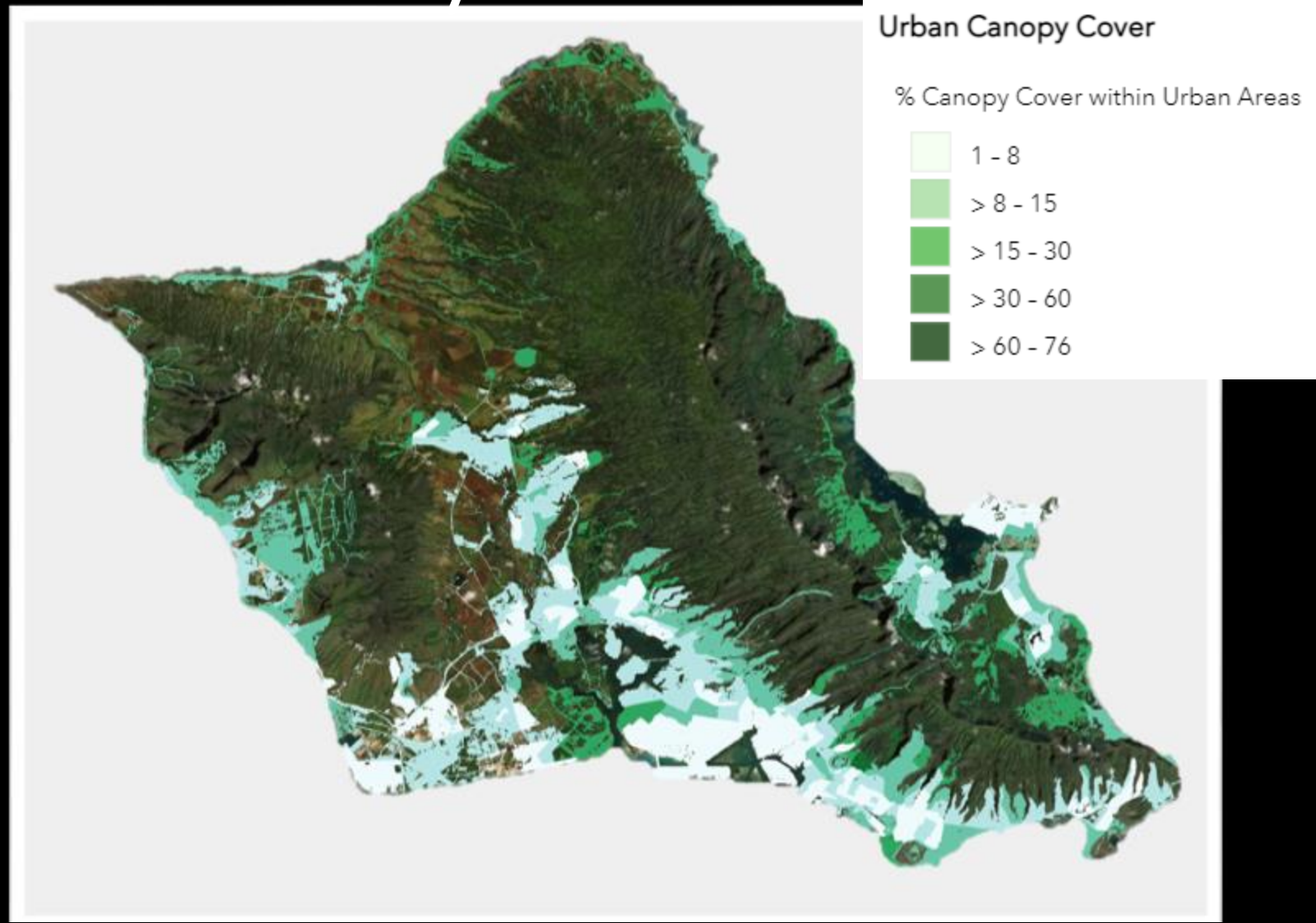


<30%

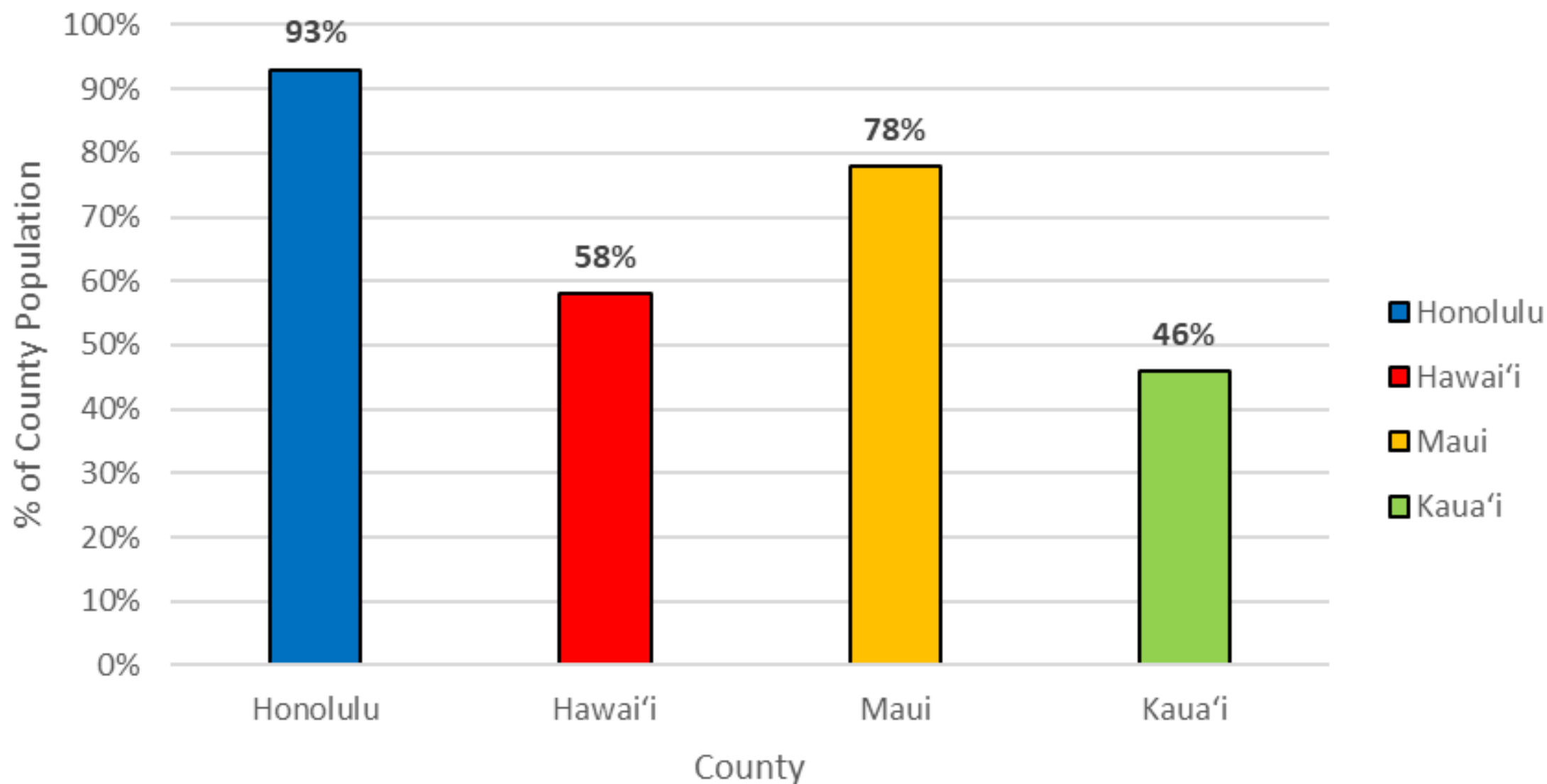
**URBAN CANOPY
C O V E R A G E**

Who lives with less than 30% urban canopy coverage in Honolulu County?

- 92% of census tracts
- 946,125 people
- 93% residents



% of County Population Living Below 30% Canopy Coverage



URBAN CANOPY

C O V E R A G E

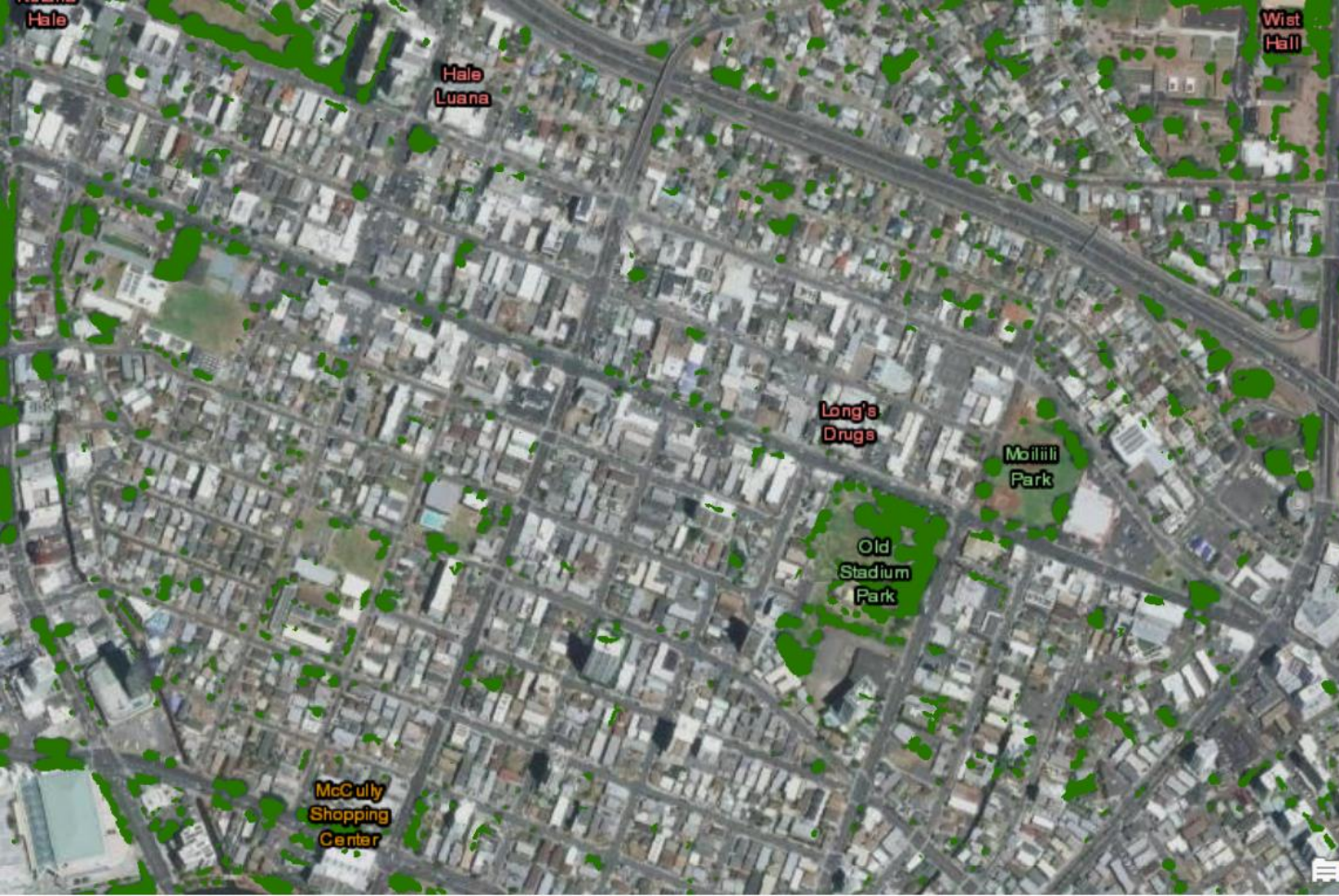
70%

**HI PUBLIC
SCHOOLS**



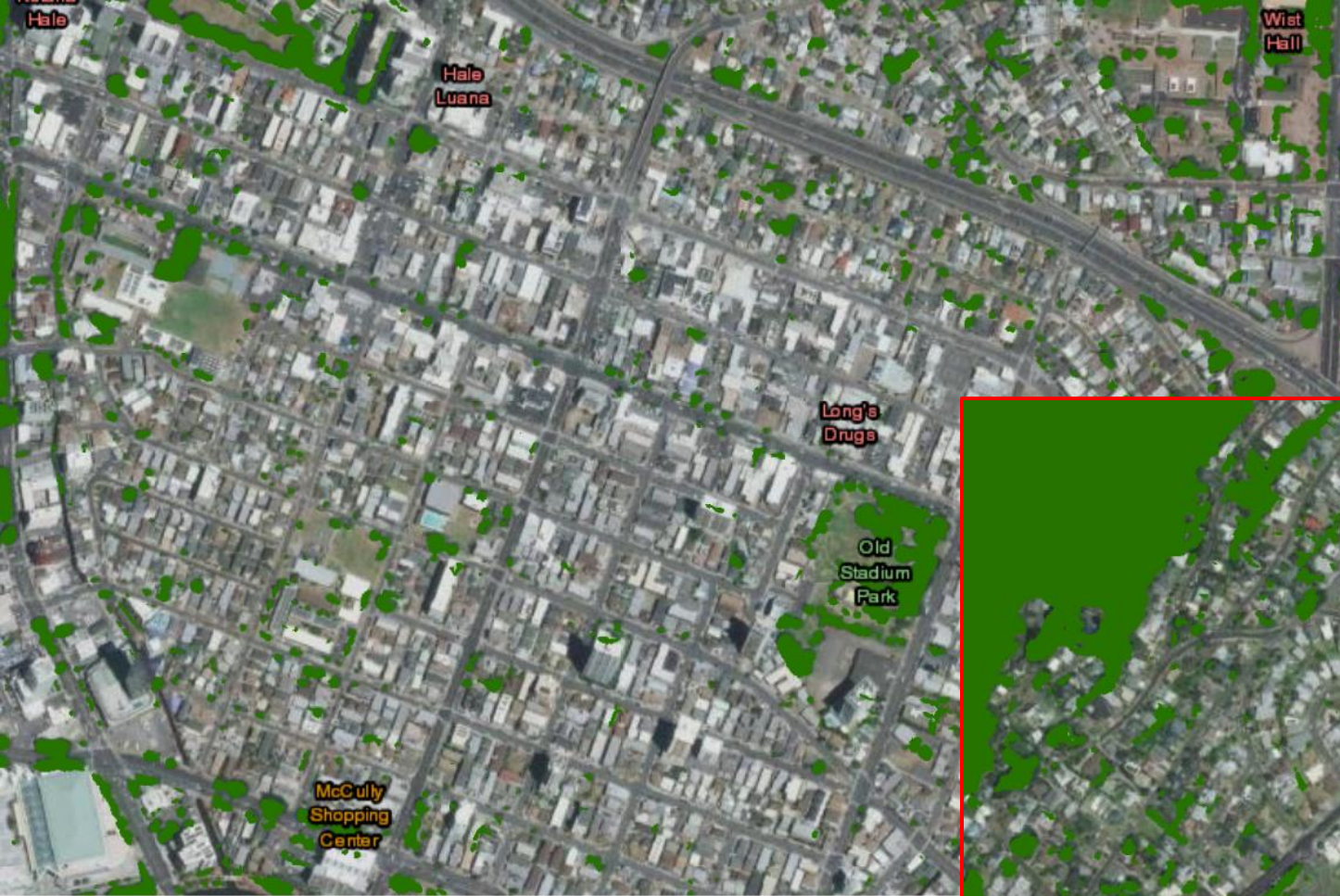
<30%

**URBAN CANOPY
C O V E R A G E**



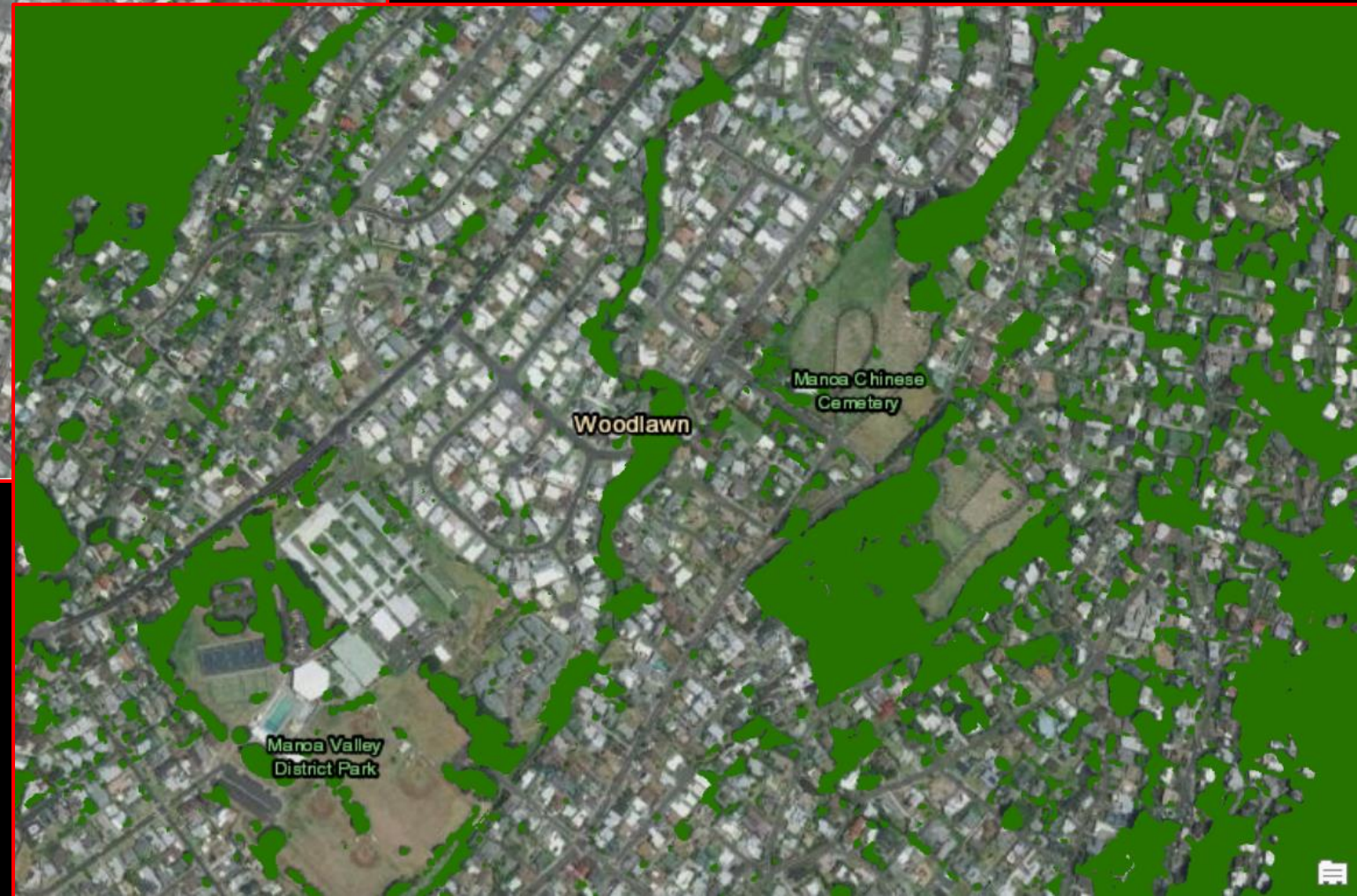
Mō'ili'ili -McCully
neighborhood

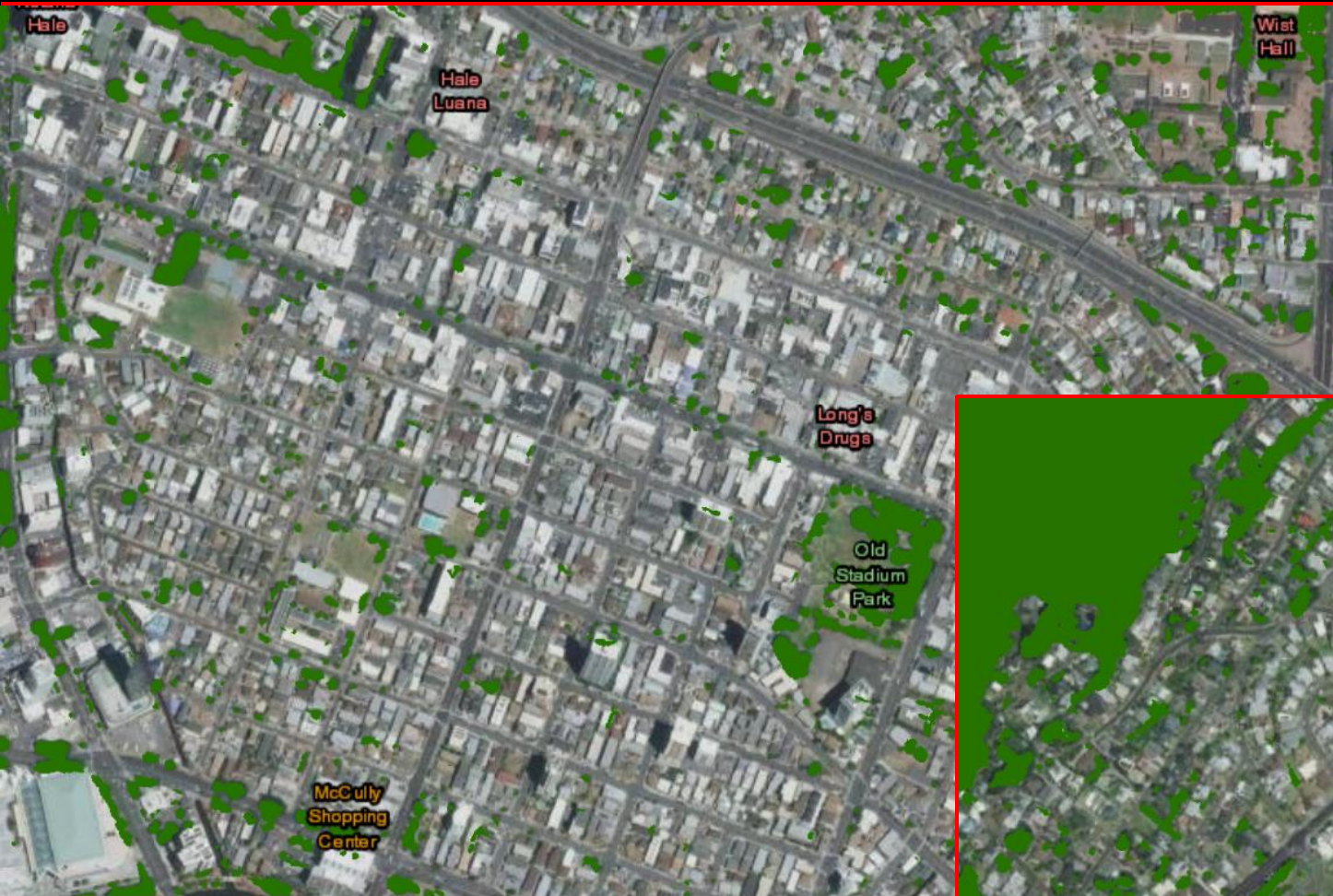
Canopy Cover = 6.7%



Mō'ili'ili -McCully
Canopy Cover 7%

Mānoa-Woodlawn
Canopy cover 20 %





Mō'ili'ili-McCully

Canopy Cover 7%

Obesity Incidence: 23.2%

SNAP Recipient: 8%

Median Household Income: \$54,391

Asthma Incidence: 8.4%

Mānoa-Woodlawn

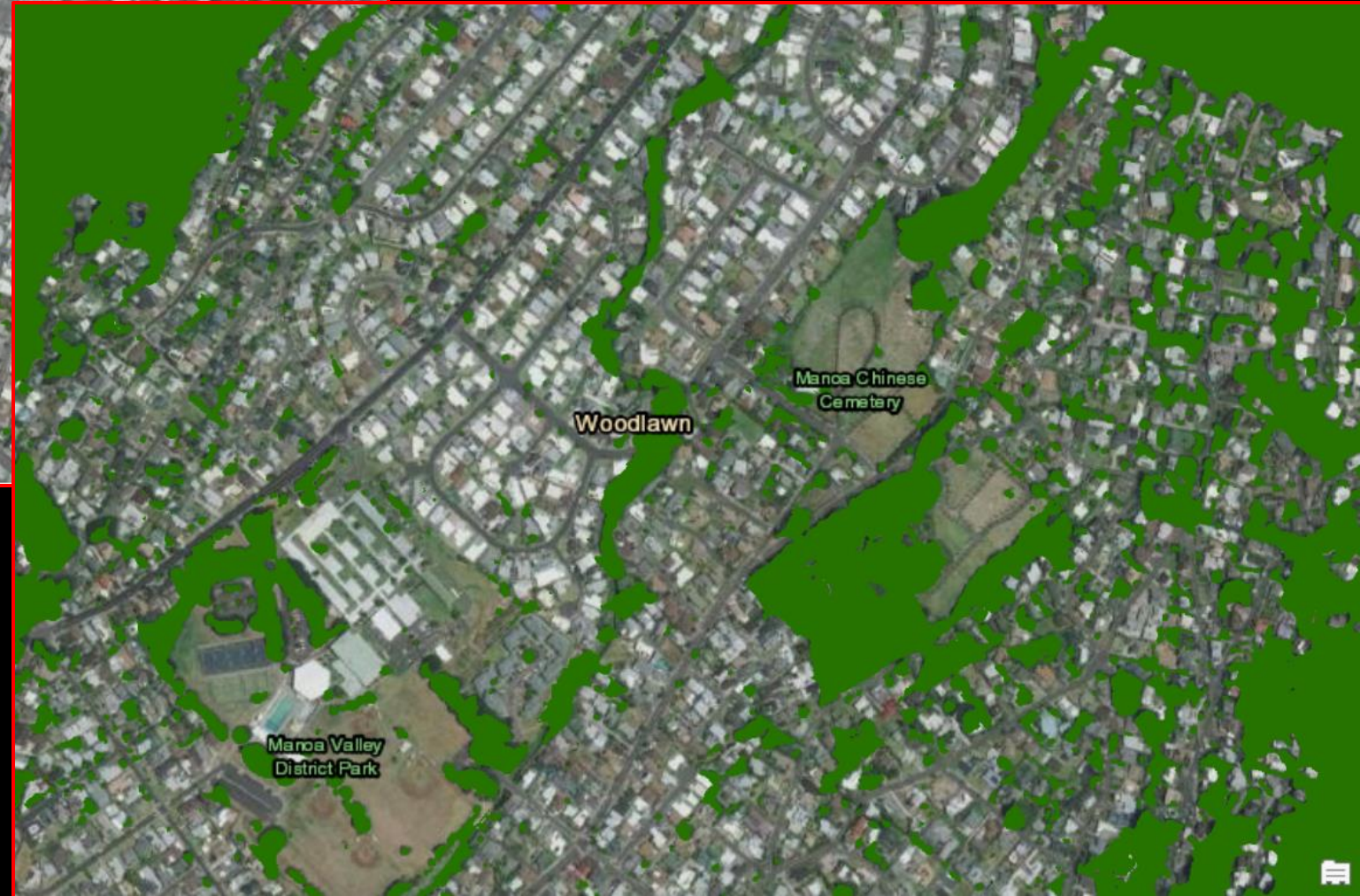
Canopy Cover: 20%

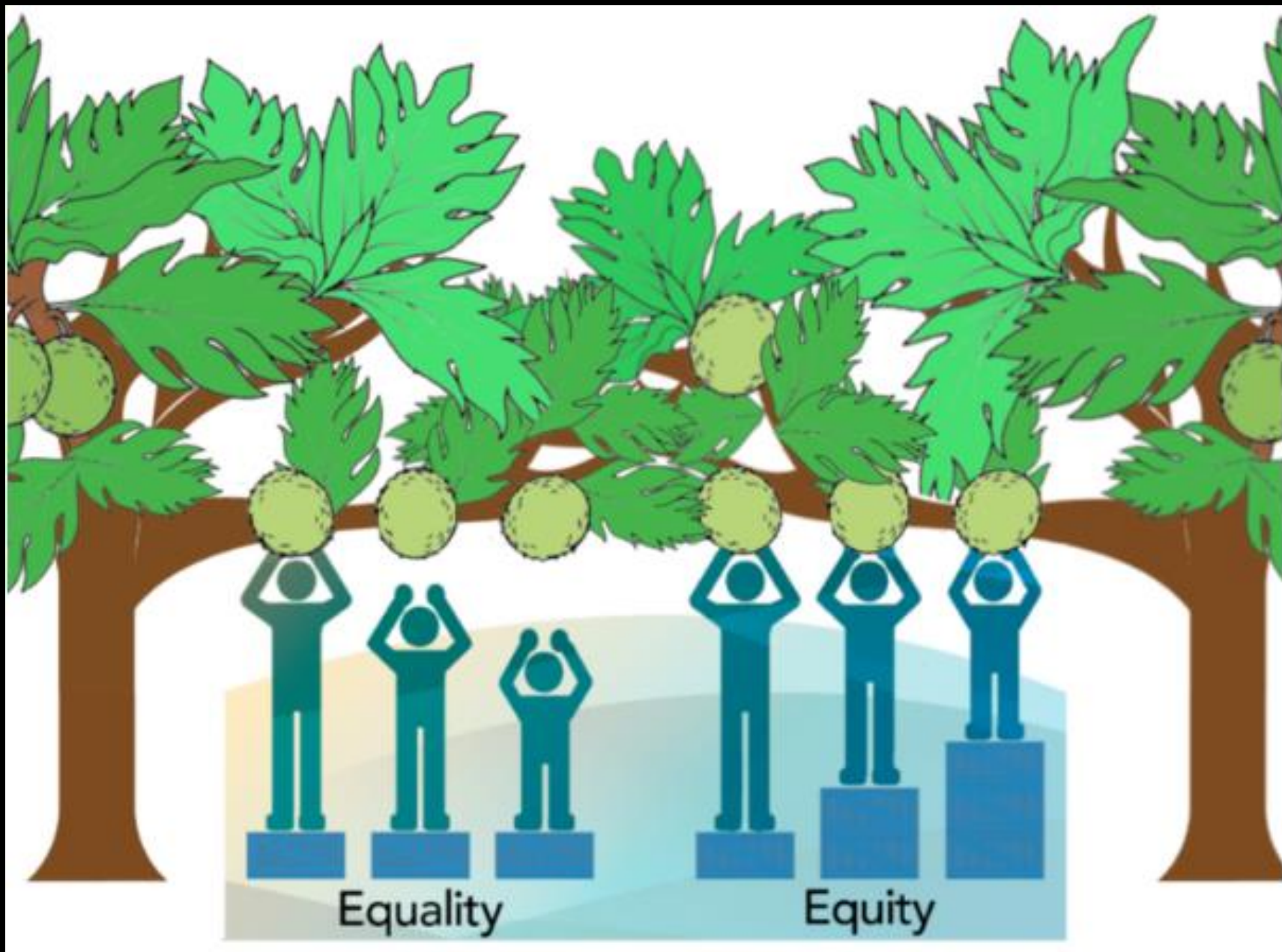
Obesity Incidence: 17.5%

SNAP Recipient: 0.5%

Median Household Income: \$119,310.50

Asthma Incidence: 7.4%





Tree Canopy Viewer Fellows

- Four Fellows
- \$5k stipends
- Mentorship
- Applications August 1 - Sept 15, 2022
- www.kaulunani.org for more info



Access the Hawai'i Tree Canopy Viewer



Department of Land and Natural Resources
Division of Forestry and Wildlife: Forestry Program

Search this site

Homepage & Island Hubs ▾ Lands & Programs ▾ Hike, Ride, & Camp ▾ Hunt ▾ Learn ▾ Connect ▾ Announcements ▾

Home » Landowner Assistance Programs » Kaulunani Urban & Community Forestry Program

KAULUNANI URBAN & COMMUNITY FORESTRY PROGRAM



KAULUNANI

Kaulunani is proud to be the State of Hawaii's Urban and Community Forestry Program housed within the Department of Land and Natural Resources' (DLNR) Division of Forestry

KAULUNANI PROGRAM

- About Kaulunani
- Kaulunani Grant Program
- Grant Program StoryMap
- Kaulunani Advisory Council
- Staff
- eNewsletter and Events
- Useful Links
- Educational & Technical Resources
- Why Trees Are Important

www.kaulunani.org

Mahalo



Heather McMillen

heather.l.mcmillen@hawaii.gov

www.kaulunani.org

@kaulunani

